

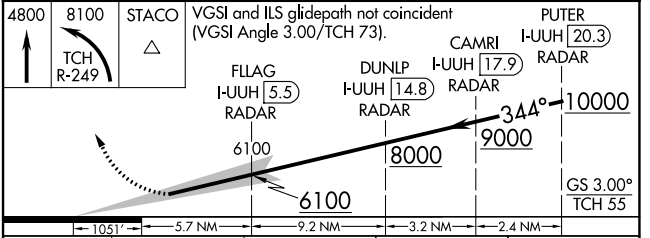
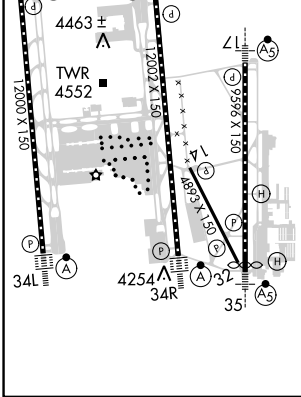
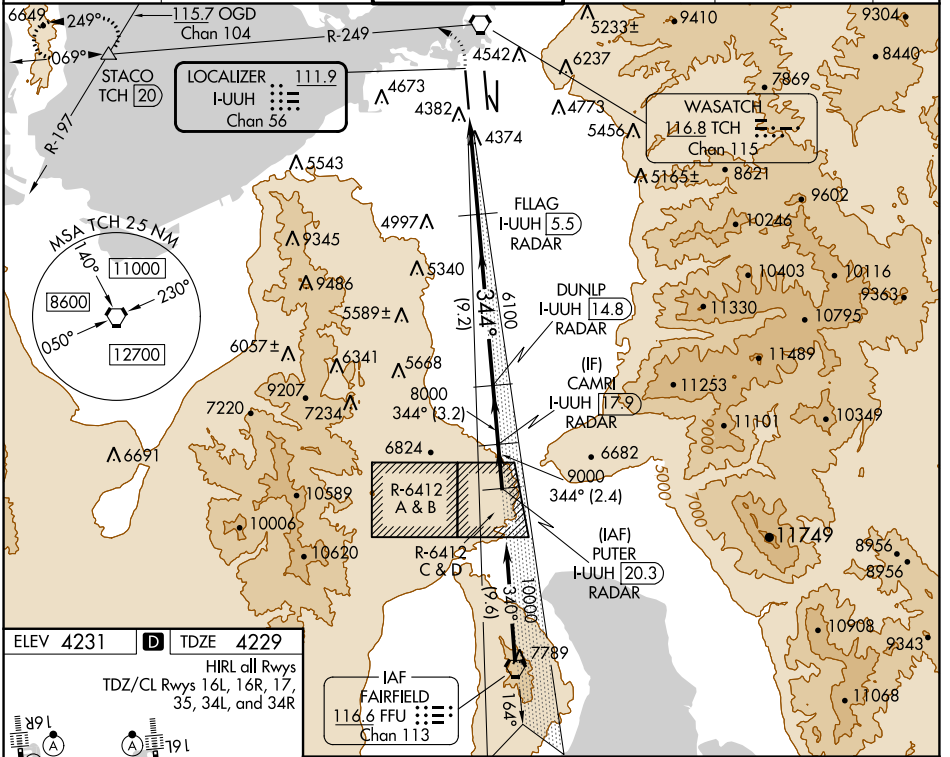
LOC/DME I-UUH 111.9 Chan 56	APP CRS 344°	Rwy Idg TDZE 12000 4229	Apt Elev 4231
--	------------------------	---	-------------------------

ILS RWY 34L (CAT II & III)

SALT LAKE CITY INTL (SLC)

RADAR required for arrivals at PUTER. DME or RADAR required.		ALSF-2 	MISSED APPROACH: Climb to 4800 then climbing left turn to 8100 on TCH VORTAC R-249 to STACO INT/TCH 20 DME and hold.
Simultaneous approach authorized. CAT II: RVR 1000 authorized with specific OPSPEC, MSPEC or LOA approval and use of autoland or HUD to touchdown.			

D-ATIS 124.75 125.625	SALT LAKE CITY APP CON 125.7 284.6	SALT LAKE CITY TOWER 132.65 336.4	GND CON 123.775 348.6	CLNC DEL 127.3 379.975	CPDLC
---------------------------------	--	---	---------------------------------	----------------------------------	-------



CATEGORY	A	B	C	D
S-ILS 34L	CAT II RA 102/12 100 DA 4329			
S-ILS 34L	CAT III RVR 03			

CATEGORY II & III ILS - SPECIAL AIRCREW & AIRCRAFT CERTIFICATION REQUIRED

SW-4, 16 MAY 2024 to 13 JUN 2024

SW-4, 16 MAY 2024 to 13 JUN 2024