

LOC/DME I-UUH 111.9 Chan 56	APP CRS 344°	Rwy Idg TDZE 12000 4229	Apt Elev 4231
--	------------------------	---	-------------------------

ILS RWY 34L (SA CAT I)

SALT LAKE CITY INTL (SLC)

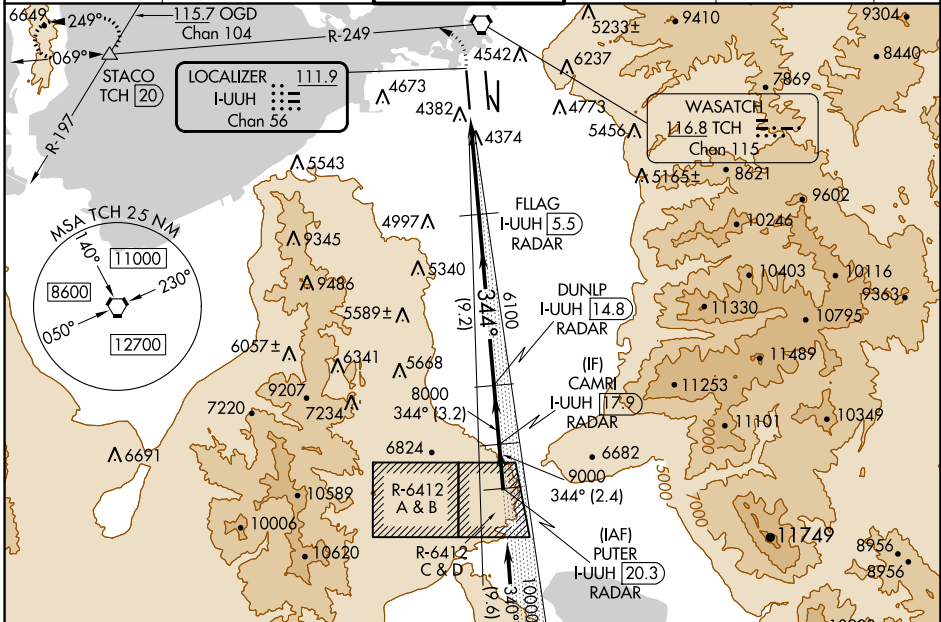
RADAR required for arrivals at PUTER. DME or RADAR required.

Simultaneous approach authorized. Requires specific OPSPEC, MSPEC, or LOA approval and use of HUD to DH.

ALSIF-2

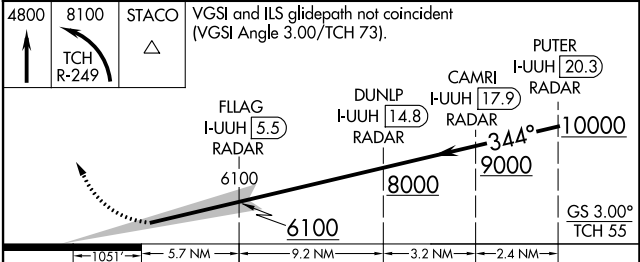
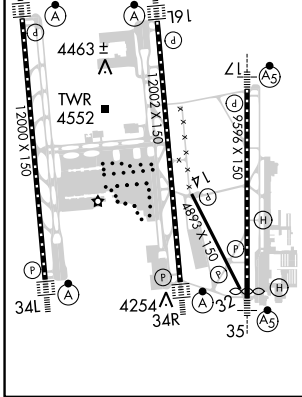
MISSED APPROACH: Climb to 4800 then climbing left turn to 8100 on TCH VORTAC R-249 to STACO INT/TCH 20 DME and hold.

D-ATIS 124.75 125.625	SALT LAKE CITY APP CON 125.7 284.6	SALT LAKE CITY TOWER 132.65 336.4	GND CON 123.775 348.6	CLNC DEL 127.3 379.975	CPDLC
---------------------------------	--	---	---------------------------------	----------------------------------	-------



ELEV 4231	D	TDZE 4229
-----------	---	-----------

HIRL all Rwys TDZ/CL Rwys 16L, 16R, 17, 35, 34L, and 34R



CATEGORY	A	B	C	D
S-ILS 34L	RA 158/14 150 DA 4379			

SA CATEGORY I ILS - SPECIAL AIRCREW & AIRCRAFT CERTIFICATION REQUIRED

SW-4, 16 MAY 2024 to 13 JUN 2024

SW-4, 16 MAY 2024 to 13 JUN 2024