

LOC/DME I-UUH <b>111.9</b> Chan 56	APP CRS <b>344°</b>	Rwy Idg TDZE <b>12000</b> <b>4229</b> Apt Elev <b>4231</b>
--	------------------------	--

# ILS or LOC RWY 34L

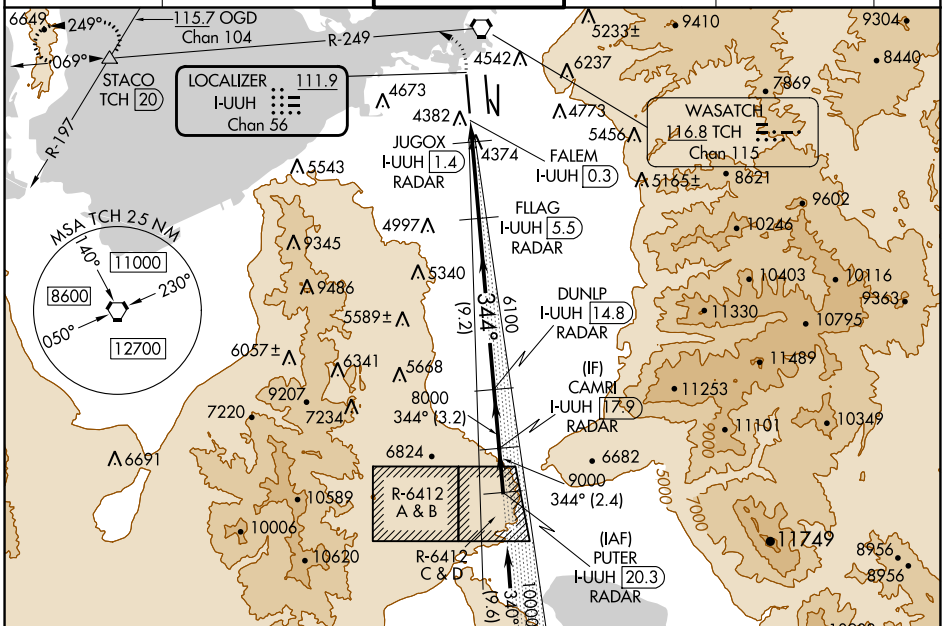
SALT LAKE CITY INTL (SLC)

RADAR required for arrivals at PUTER. DME or RADAR required.

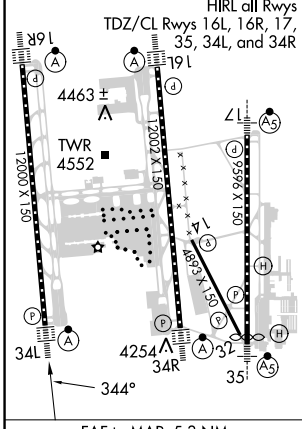
Simultaneous approach authorized. For inop ALS, increase S-LOC 34L Cat C/D visibility to RVR 6000.

ALSIF-2  
MISSED APPROACH: Climb to 800 then climbing left turn to 8100 on TCH VORTAC R-249 to STACO INT/TCH 20 DME and hold.

D-ATIS <b>124.75 125.625</b>	SALT LAKE CITY APP CON <b>125.7 284.6</b>	SALT LAKE CITY TOWER <b>132.65 336.4</b>	GND CON <b>123.775 348.6</b>	CLNC DEL <b>127.3 379.975</b>	CPDLC
---------------------------------	--	---	---------------------------------	----------------------------------	-------



ELEV 4231	TDZE 4229
-----------	-----------

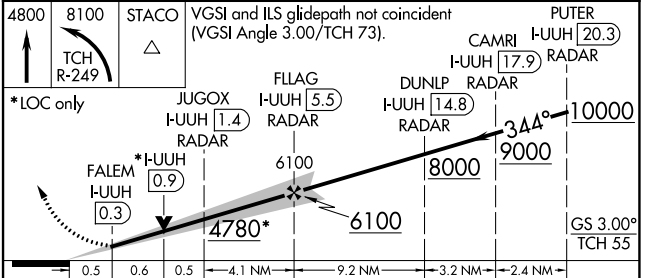


IAF FAIRFIELD 116.6 FFU Chan 113

4800 8100 STACO VGS1 and ILS glidepath not coincident (VGS1 Angle 3.00/TCH 73).

PUTER I-UUH 20.3 RADAR

CAMRI I-UUH 17.9 RADAR



CATEGORY	A	B	C	D
S-ILS 34L	4429/18 200 (200-½)			
S-LOC 34L	4640/24	411 (500-½)	4640/40	411 (500-¾)

FAF to MAP 5.3 NM

Knots	60	90	120	150	180
Min:Sec	5:18	3:32	2:39	2:07	1:46

SW-4, 16 MAY 2024 to 13 JUN 2024

SW-4, 16 MAY 2024 to 13 JUN 2024