

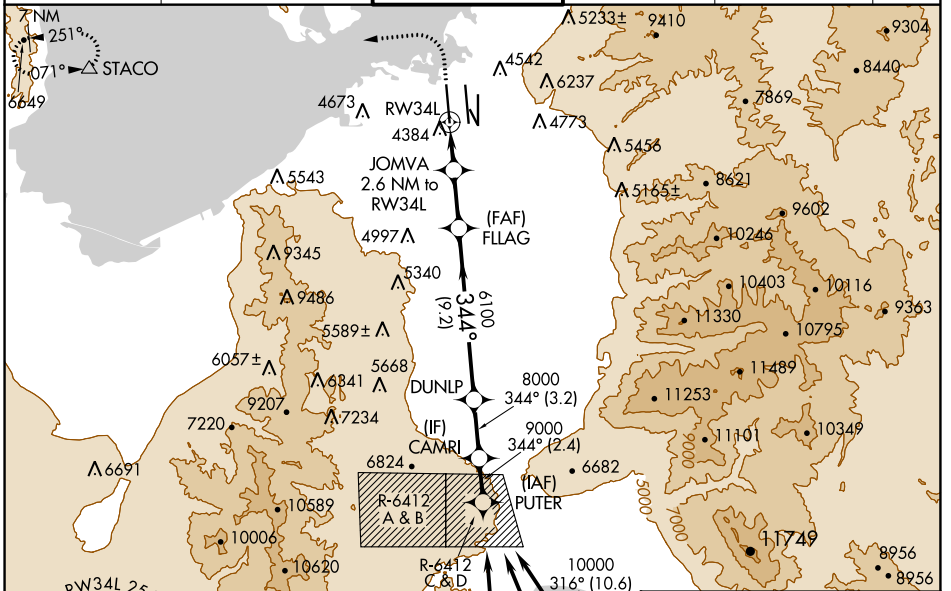
WAAS CH <b>70432</b> <b>W34B</b>	APP CRS <b>344°</b>	Rwy Idg TDZE Apt Elev	<b>12000</b> <b>4229</b> <b>4231</b>
--	------------------------	-----------------------------	--

# RNAV (GPS) RWY 34L

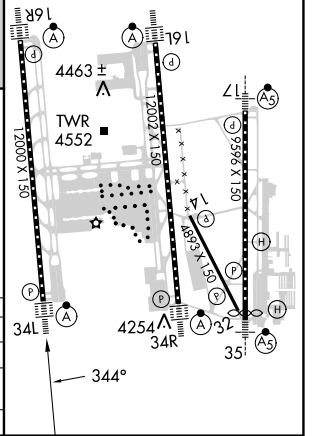
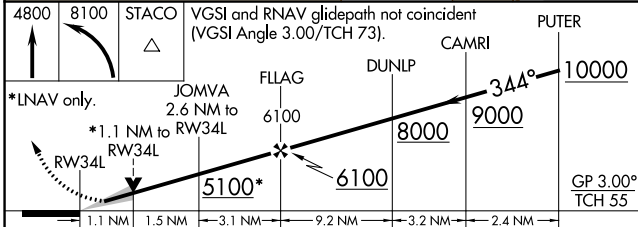
SALT LAKE CITY INTL (SLC)

RNP APCH.	<p>Simultaneous approach authorized. Use of FD or AP providing RNAV track guidance required during simultaneous operations. LNAV procedure NA during simultaneous operations. For uncompensated Baro-VNAV systems, LNAV/VNAV NA below -15°C or above 49°C. For inop ALS, increase LPV Cat E visibility to RVR 4000, LNAV/VNAV all Cats visibility to RVR 6000, LNAV Cat E visibility to 1½ SM.</p>	<p>ALS-F-2</p>	<p>MISSED APPROACH: Climb to 4800 then climbing left turn to 8100 direct STACO and hold.</p>
-----------	--	----------------	--

D-ATIS <b>124.75 125.625</b>	SALT LAKE CITY APP CON <b>125.7 284.6</b>	SALT LAKE CITY TOWER <b>132.65 336.4</b>	GND CON <b>123.775 348.6</b>	CLNC DEL <b>127.3 379.975</b>	CPDLC
---------------------------------	--	---	---------------------------------	----------------------------------	-------



ELEV 4231	TDZE 4229
HIRL all Rwy's	
TDZ/CL Rwy's 16L, 16R, 17, 35, 34L, and 34R	



CATEGORY	A	B	C	D	E
LPV DA		4429/18	200 (200-½)		
LNAV/VNAV DA		4640/40	411 (500-¾)		
LNAV MDA	4660/24	431 (500-½)	4660/40	431 (500-¾)	

SW-4, 16 MAY 2024 to 13 JUN 2024

SW-4, 16 MAY 2024 to 13 JUN 2024