

WAAS CH 49230 W34A	APP CRS 344°	Rwy ldg 12002 TDZE 4222 Apt Elev 4227
--	------------------------	--

RNAV (GPS) RWY 34R

SALT LAKE CITY INTL (SLC)

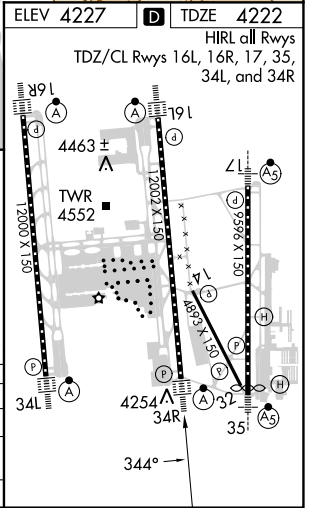
NA Simultaneous approach authorized. DME/DME RNP-0.3 NA. Use of FD or AP providing RNAV track guidance required during simultaneous operations. LNAV procedure NA during simultaneous operations. For uncompensated Baro-VNAV systems, LNAV/VNAV NA below -17°C (1°F) or above 49°C (121°F). For inop ALS, increase LPV Cat E visibility to ¾, LNAV/VNAV Cat E visibility to ¾ and LNAV Cate C/D/E to 1½ SM.

ALSIF-2
MISSED APPROACH: Climb to 9000 direct TCH VORTAC and on track 336° to OGD VORTAC and hold.

D-ATIS 124.75 125.625	SALT LAKE CITY APP CON 125.7 284.6	SALT LAKE CITY TOWER 119.05 257.8	GND CON 123.775 348.6	CLNC DEL 127.3 379.975	CPDLC
---------------------------------	--	---	---------------------------------	----------------------------------	-------



ELEV 4227	TDZE 4222
HIRL all Rwys TDZ/CL Rwys 16L, 16R, 17, 35, 34L, and 34R	



9000	TCH	OGD	VGSI and RNAV glidepath not coincident (VGSI Angle 3.00/TCH 73).
ALGIE			
PLAGE			
HAKKR			
CHEVL			
IRUYU 1.5 NM to GITBE			
*0.8 NM to GITBE			
GITBE			
4900			
6100			
9000			
10000			
GP 3.00°			
TCH 53			
0.4			
0.8			
0.7 NM			
3.8 NM			
9.1 NM			
3.1 NM			
2.4 NM			
CATEGORY	A	B	C
LPV DA	4422/18 200 (200-½)		
LNAV/VNAV DA	4735/60 513 (600-1½)		
LNAV MDA	4700/24 478 (500-½)	4700/50 478 (500-1)	

SW-4, 16 MAY 2024 to 13 JUN 2024

SW-4, 16 MAY 2024 to 13 JUN 2024