

(BEARR.SKEES5) 17229

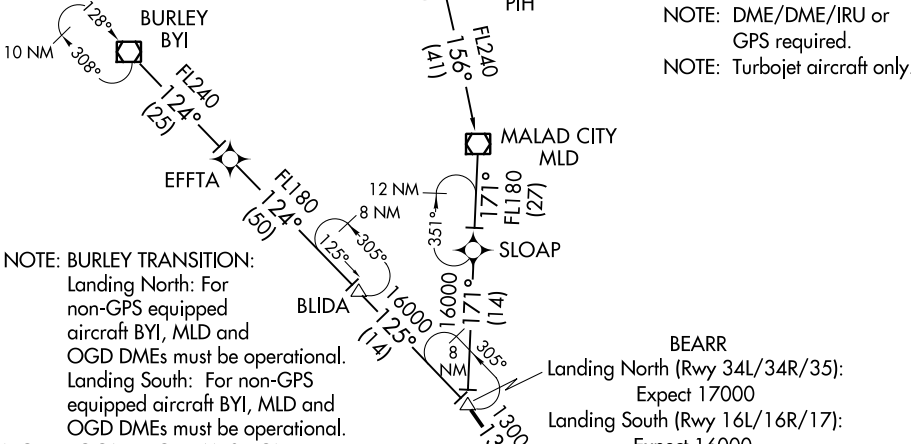
SKES FIVE ARRIVAL (RNAV)

AL-365 (FAA)

SALT LAKE CITY INTL (SLC)
SALT LAKE CITY, UTAH

SALT LAKE CITY APP CON
124.9 290.3
D-ATIS
124.75 125.625

NOTE: RADAR required.
NOTE: RNAV 1.
NOTE: DME/DME/IRU or GPS required.
NOTE: Turbojet aircraft only.



NOTE: BURLEY TRANSITION:
Landing North: For non-GPS equipped aircraft BYI, MLD and OGD DMEs must be operational.
Landing South: For non-GPS equipped aircraft BYI, MLD and OGD DMEs must be operational.

NOTE: POCATELLO TRANSITION:
Landing North: For non-GPS equipped aircraft DBS, IDA, LHO, MLD, OGD and PIH DMEs must be operational.
Landing South: For non-GPS equipped aircraft DBS, IDA, LHO, MLD, OGD and PIH DMEs must be operational.

BEARR
Landing North (Rwy 34L/34R/35):
Expect 17000
Landing South (Rwy 16L/16R/17):
Expect 16000.

ARRIVAL ROUTE DESCRIPTION

BURLEY TRANSITION (BYI.SKES5)
POCATELLO TRANSITION (PIH.SKES5)

From BEARR on track 134° to SKEES.

LANDING NORTH (RUNWAYS 34L/R and 35):
From SKEES on track 141° to HUUUPR, thence as depicted to CEEDR, then on heading 164°. Expect RADAR vectors to final approach course.

LANDING SOUTH (RUNWAYS 16L/R and 17):
From SKEES on track 121° to BOOOT, thence as depicted to IRRON, then on heading 164°. Rwy 16L intercept I-MOY localizer. Proceed inbound, expect ILS/Visual approach. Rws 16R and 17 expect RADAR vectors to final approach course.

LOST COMMUNICATIONS

LANDING SOUTH: At IRRON, turn right direct to OGD VORTAC and hold. Maintain 11000.

LANDING NORTH: At CEEDR, turn left direct to FFU VORTAC and hold. Maintain 11000.

LOCALIZER: 109.5
I-MOY
Chan 32

NOTE: Chart not to scale.

SALT LAKE CITY, UTAH
SALT LAKE CITY INTL (SLC)

SW-4, 16 MAY 2024 to 13 JUN 2024

SW-4, 16 MAY 2024 to 13 JUN 2024

SKES FIVE ARRIVAL (RNAV)

(BEARR.SKEES5) 17AUG17