

LOC/DME I-ANT 110.9 Chan 46	APP CRS 128°	Rwy 13R Idg 8502 TDZE 809 Apt Elev 809
---	------------------------	---

ILS RWY 13R (CAT II)

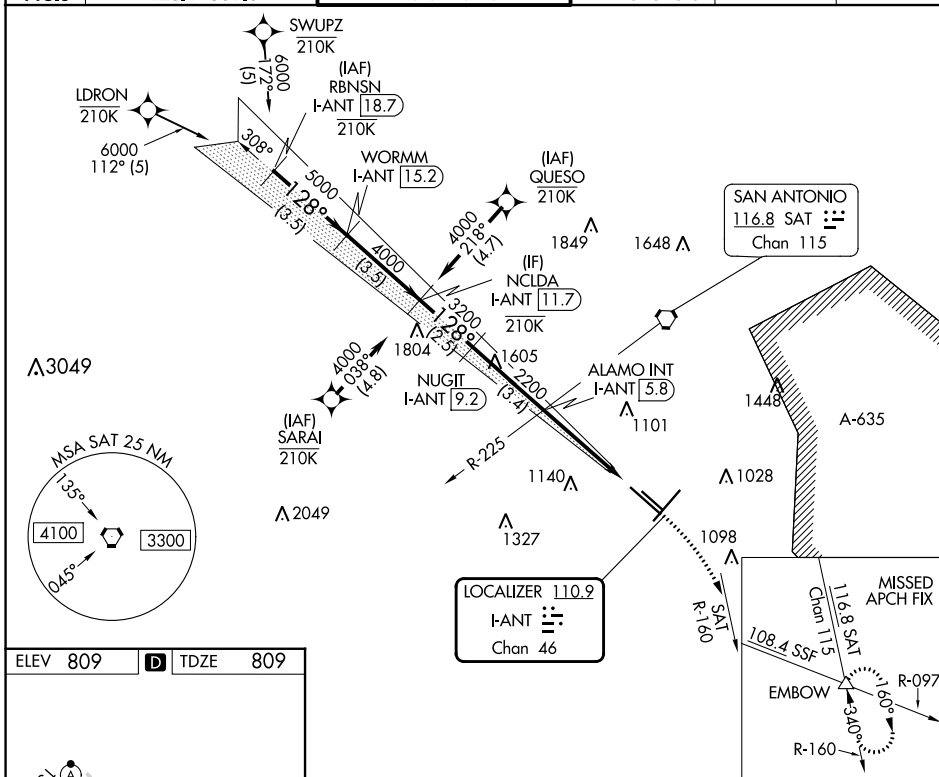
SAN ANTONIO INTL (SAT)

RNP APCH-GPS. From LDRON, SWUPZ, SARAI, QUESO.
RNAV 1-GPS or RADAR required for procedure entry. DME required.

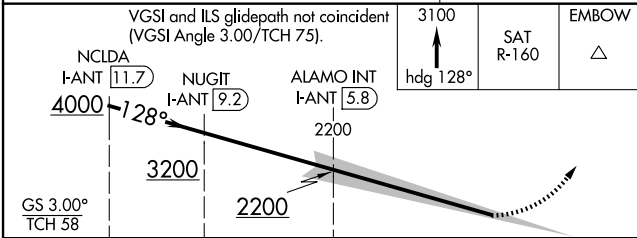
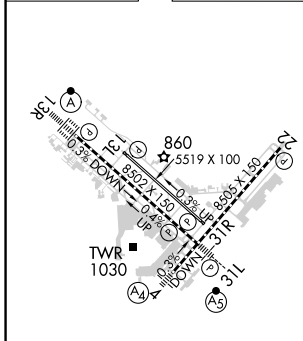
ALSF-2
A

MISSED APPROACH: Climb to 3100 on heading 128° and SAT VORTAC R-160 to EMBOW INT and hold.

D-ATIS 118.9	SAN ANTONIO APP CON 125.1 307.0	SAN ANTONIO TOWER 119.8 257.8	GND CON 121.9 348.6	CLNC DEL 126.7	CPDLC
------------------------	---	---	-------------------------------	--------------------------	-------



ELEV 809	D TDZE 809
-----------------	--------------------------



VGSI and ILS glidepath not coincident (VGSI Angle 3.00/TCH 75).	3100 hdg 128°	EMBOW
NCLDA I-ANT [11.7] 4000	NUGIT I-ANT [9.2] 3200	ALAMO INT I-ANT [5.8] 2200
2.5 NM	3.4 NM	4.2 NM
GS 3.00°	TCH 58	
195°		

CATEGORY A B C D
S-ILS 13R RA 104/12 100 DA 909

CATEGORY II ILS - SPECIAL AIRCREW & AIRCRAFT CERTIFICATION REQUIRED

TDZ/CL Rwy 13R
REIL Rws 13L, 22 and 31R
HIRL Rws 4-22 and 13R-31L
MIRL Rwy 13L-31R

SC-3, 16 MAY 2024 to 13 JUN 2024

SC-3, 16 MAY 2024 to 13 JUN 2024