

LOC/DME I-ZR 110.9 Chan 46	APP CRS 308°	Rwy 31L Idg 8502 TDZE 790 Apt Elev 809	Rwy 31R Idg 5519 TDZE 788 Apt Elev 809
--	------------------------	---	---

ILS or LOC RWY 31L

SAN ANTONIO INTL (SAT)

RNP APCH - GPS

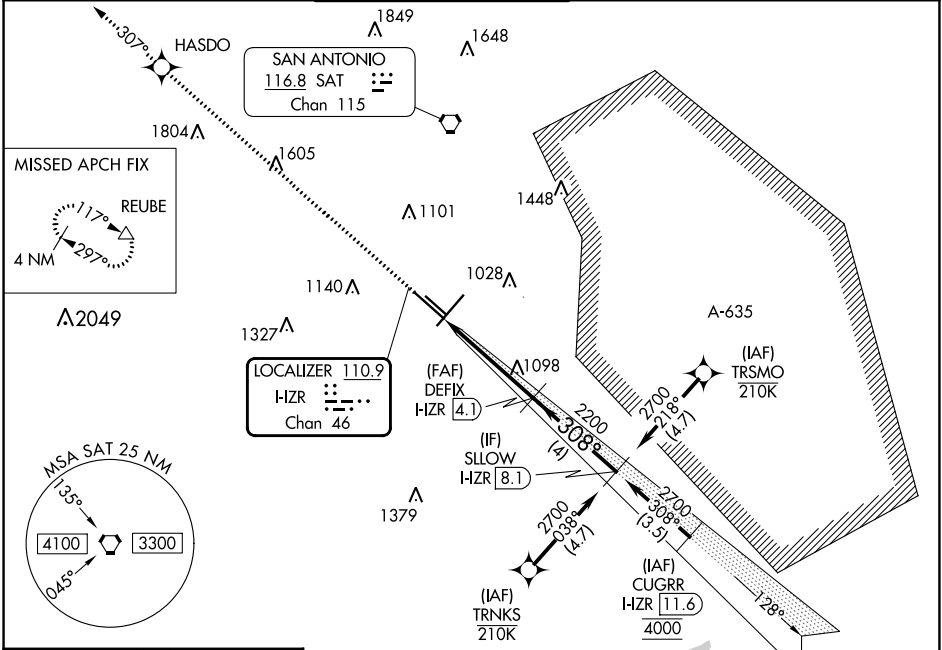
Aircraft not GPS equipped - RADAR required for procedure entry. DME required.

- ⚠ Circling NA northwest of Rws 4 and 13R.
- ⚠ * RVR 1800 authorized with use of FD or AP or HUD to DA.



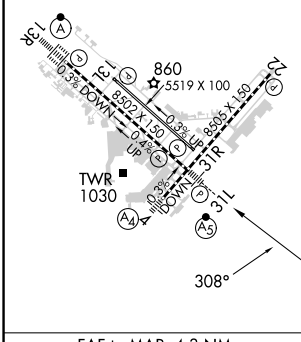
MISSED APPROACH: Climb to 4200 direct HASDO and track 307° to REUBE and hold.

D-ATIS 118.9	SAN ANTONIO APP CON 125.1 307.0	SAN ANTONIO TOWER 119.8 257.8	GND CON 121.9 348.6	CLNC DEL 126.7	CPDLC
------------------------	---	---	-------------------------------	--------------------------	-------

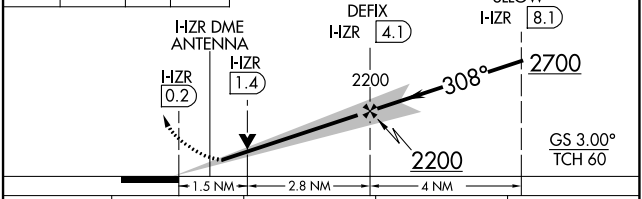


ELEV 809	D	TDZE 790 31L 788 31R
-----------------	----------	---------------------------------------

TDZ/CL Rwy 13R
REIL Rws 13L, 22 and 31R
HIRL Rws 4-22 and 13R-31L
MIRL Rwy 13L-31R



4200 HASDO REUBE
↑ ✧ tr 307° △
VGSi and ILS glidepath not coincident (VGSi Angle 3.00/TCH 82).



CATEGORY	A	B	C	D
S-ILS 31L *	990/24 200 (200-½)			
S-LOC 31L	1360/24	570 (600-½)	1360/60	570 (600-¼)
SIDESTEP 31R	1360-1	572 (600-1)	1360-1½ 572 (600-½)	1360-2 572 (600-2)
C CIRCLING	1360-1	551 (600-1)	1420-1¾ 611 (700-1¾)	1520-2¼ 711 (800-2¼)

FAF to MAP 4.3 NM

Knots	60	90	120	150	180
Min:Sec	4:18	2:52	2:09	1:43	1:26

SC-3, 16 MAY 2024 to 13 JUN 2024

SC-3, 16 MAY 2024 to 13 JUN 2024