

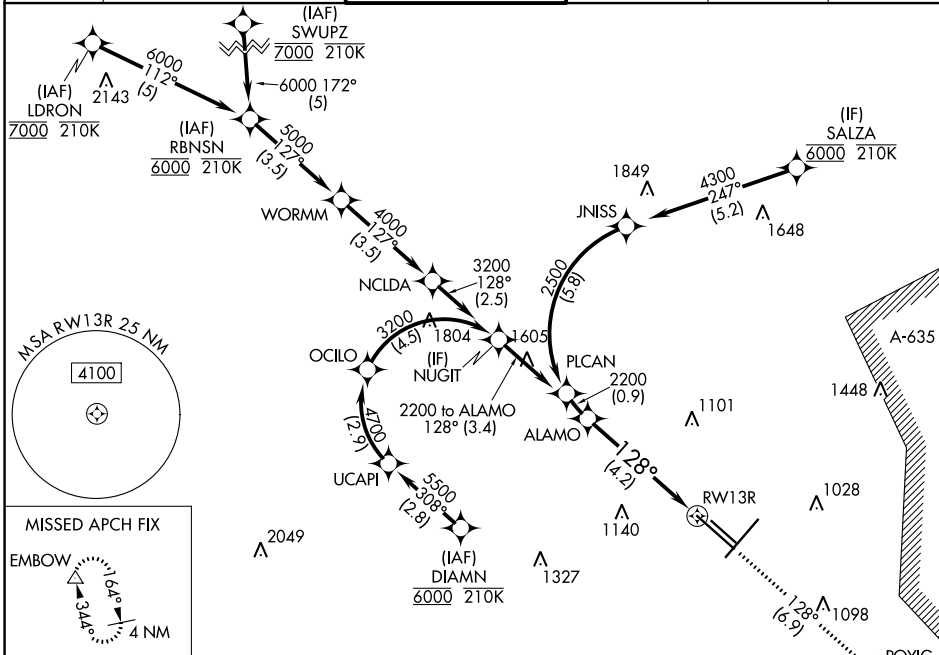
RNAV (RNP) Z RWY 13R

SAN ANTONIO INTL (SAT)

APP CRS	Rwy Idg	8502
128°	TDZE	809
	Apt Elev	809

RNP AR APCH - GPS.		ALSF-2	MISSED APPROACH: (Do not exceed 210K until POYIG) Climb to 3100 on track 128° to POYIG and track 171° to EMBOW and hold.
For uncompensated Baro-VNAV systems, procedure NA below -5°C or above 54°C. For inop ALS, increase RNP 0.3 all Cats visibility to RVR 6000.			

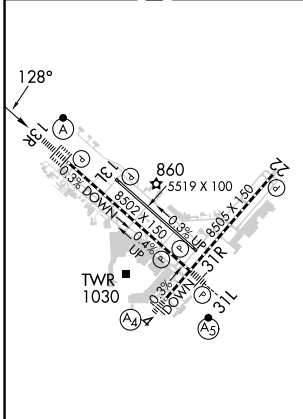
D-ATIS	SAN ANTONIO APP CON	SAN ANTONIO TOWER	GND CON	CLNC DEL	CPDLC
118.9	125.1 307.0	119.8 257.8	121.9 348.6	126.7	



SC-3, 16 MAY 2024 to 13 JUN 2024

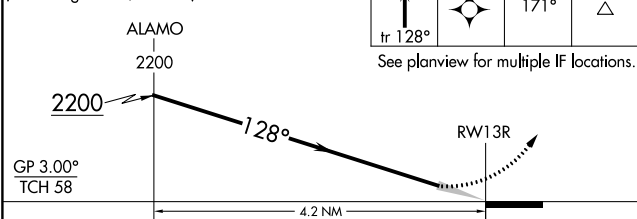
SC-3, 16 MAY 2024 to 13 JUN 2024

ELEV 809	D	TDZE 809
----------	----------	----------



TDZ/CL Rwy 13R
 REIL Rwy 13L, 22 and 31R
 HIRL Rwy 4-22 and 13R-31L
 MIRL Rwy 13L-31R

VGSI and RNAV glidepath not coincident (VGSI Angle 3.00/TCH 75).



GP 3.00°	TCH 58	4.2 NM		
CATEGORY	A	B	C	D
RNP 0.15 DA		1137/26	328 (400-½)	
RNP 0.30 DA		1218/40	409 (500-¾)	

AUTHORIZATION REQUIRED