

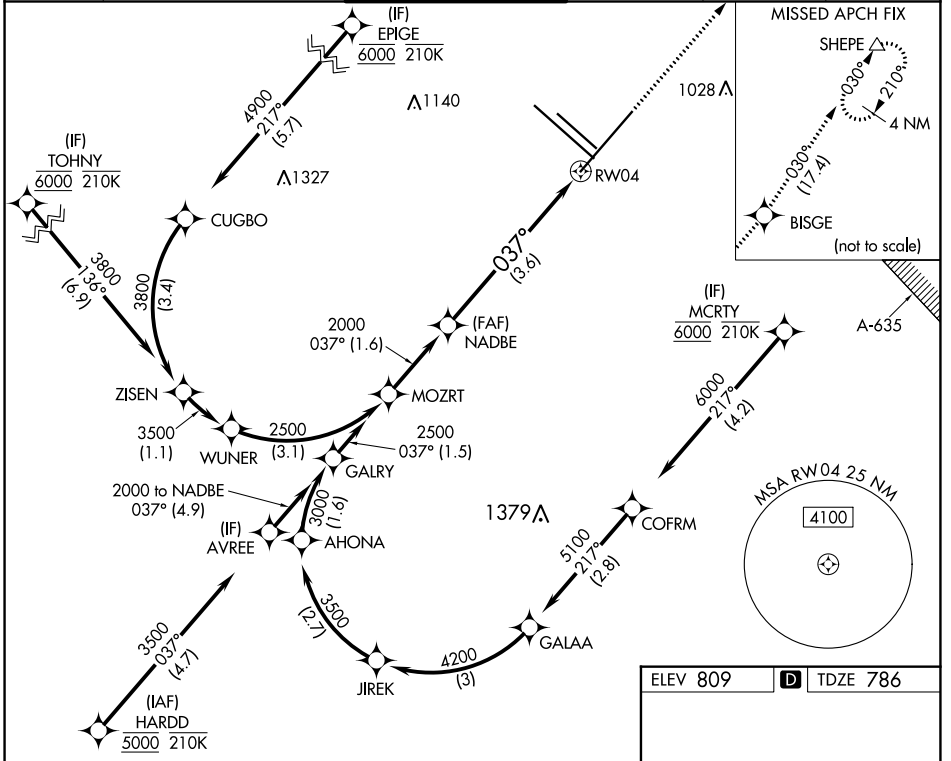
APP CRS	Rwy Idg	8505
037°	TDZE	786
	Apt Elev	809

RNAV (RNP) Z RWY 4

SAN ANTONIO INTL (SAT)

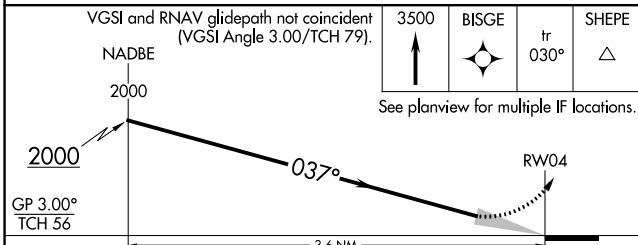
RNP AR APCH - GPS.		MALS	MISSED APPROACH: Climb to 3500 direct BISGE and track 030° to SHEPE and hold.
▼ For uncompensated Baro-VNAV systems, procedure NA below -5°C or above 54°C.			

D-ATIS	SAN ANTONIO APP CON	SAN ANTONIO TOWER	GND CON	CLNC DEL	CPDLC
118.9	125.1 307.0	119.8 257.8	121.9 348.6	126.7	



SC-3, 16 MAY 2024 to 13 JUN 2024

SC-3, 16 MAY 2024 to 13 JUN 2024



CATEGORY	A	B	C	D
RNP 0.15 DA		1167/45	381 (400-¾)	
RNP 0.30 DA		1286/60	500 (500-1¼)	
AUTHORIZATION REQUIRED				

