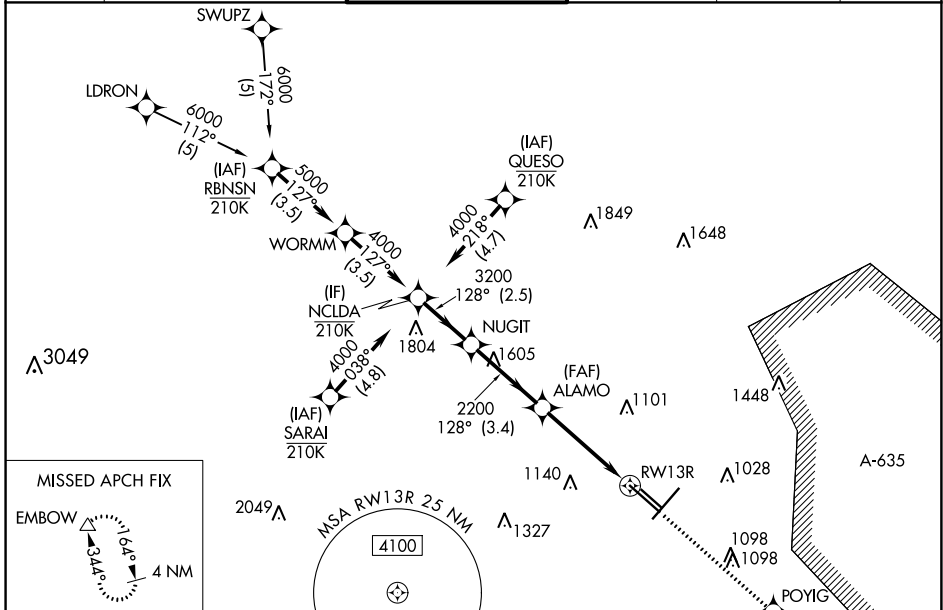


WAAS CH <b>82409</b> <b>W13A</b>	APP CRS <b>128°</b>	Rwy Idg TDZE <b>809</b> Apt Elev <b>809</b>	<b>8502</b>
--	------------------------	---	-------------

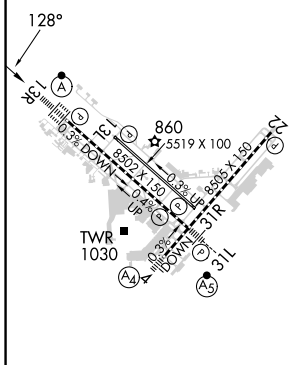
# RNAV (GPS) Y RWY 13R

SAN ANTONIO INTL (SAT)

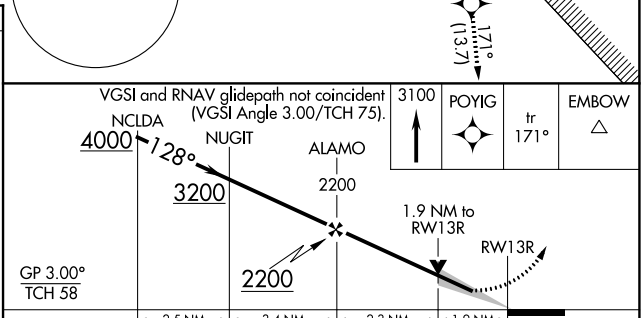
RNP APCH - GPS.		SAN ANTONIO TOWER		GND CON		CLNC DEL		CPDLC	
<p>⚠ Circling NA northwest of Rwy 4 and 13R. For uncompensated Baro-VNAV systems, LNAV/VNAV NA below -5°C or above 54°C. For inop ALS, increase LNAV/VNAV all Cats visibility to RVR 6000 and LNAV Cats C and D visibility to 1½ SM.</p>		<p><b>119.8 257.8</b></p>		<p><b>121.9 348.6</b></p>		<p><b>126.7</b></p>			



ELEV <b>809</b>	<b>D</b>	TDZE <b>809</b>
-----------------	----------	-----------------



TDZ/CL Rwy 13R  
REIL Rwy 13L, 22 and 31R  
HIRL Rwy 4-22 and 13R-31L  
MIRL Rwy 13L-31R



CATEGORY	A	B	C	D
LPV DA		1009/18	200 (200-½)	
LNAV/VNAV DA		1221/40	412 (500-¾)	
LNAV MDA	1480/24	671 (700-½)	1480-1½	671 (700-1½)
CIRCLING	1480-1	671 (700-1)	1480-2 671 (700-2)	1520-2¼ 711 (800-2¼)

SC-3, 16 MAY 2024 to 13 JUN 2024

SC-3, 16 MAY 2024 to 13 JUN 2024