

WAAS CH <b>69430</b> W22A	APP CRS <b>217°</b>	Rwy Idg TDZE <b>8505</b> <b>770</b> Apt Elev <b>809</b>
---------------------------------	------------------------	---

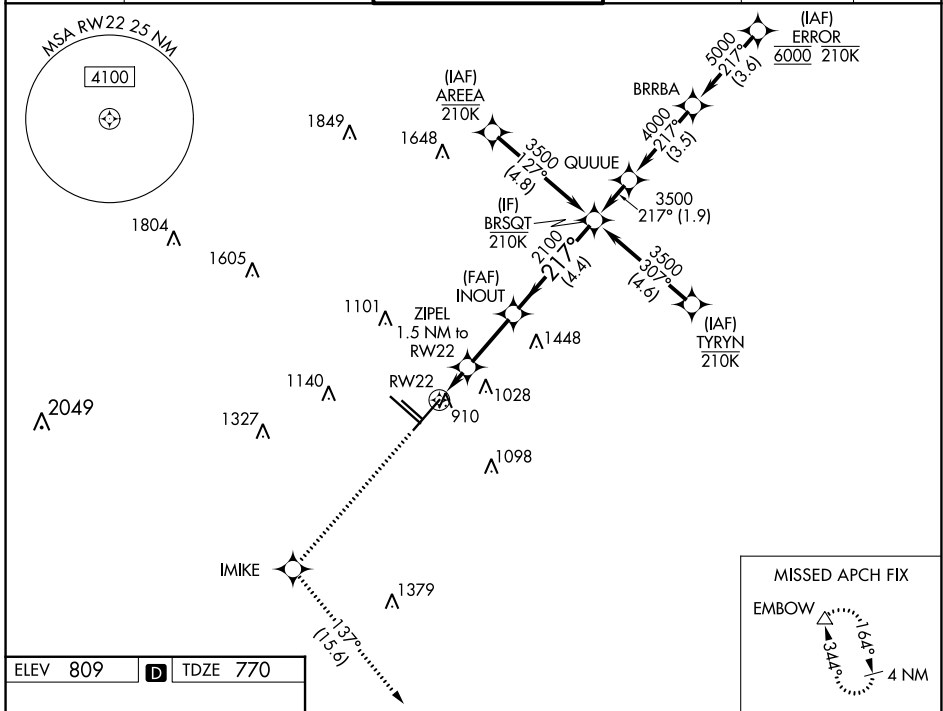
# RNAV (GPS) Y RWY 22

SAN ANTONIO INTL (SAT)

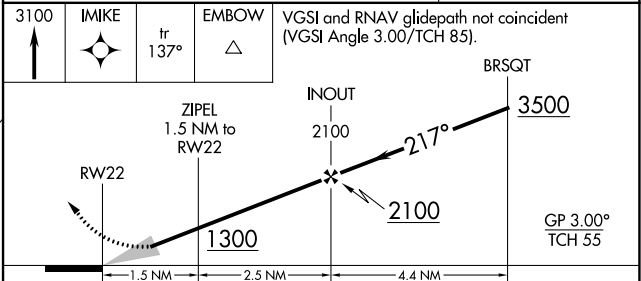
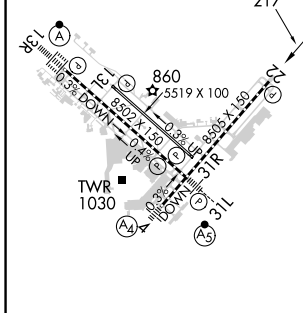
RNP APCH - GPS.  
 ⚠ Circling NA northwest of Rws 4 and 13R. For uncompensated Baro-VNAV systems, LNAV/VNAV NA below -5°C or above 54°C.

MISSED APPROACH: Climb to 3100 direct IMIKE and on track 137° to EMBOW and hold.

D-ATIS <b>118.9</b>	SAN ANTONIO APP CON <b>125.1 307.0</b>	SAN ANTONIO TOWER <b>119.8 257.8</b>	GND CON <b>121.9 348.6</b>	CLNC DEL <b>126.7</b>	CPDLC
------------------------	---	---	-------------------------------	--------------------------	-------



ELEV 809	<b>D</b>	TDZE 770
----------	----------	----------



CATEGORY	A	B	C	D
LPV DA		970-3/4	200 (200-3/4)	
LNAV/VNAV DA		1220-1 3/8	450 (500-1 3/8)	
LNAV MDA	1220-1	450 (500-1)	1220-1 3/8	450 (500-1 3/8)
CIRCLING	1280-1 471 (500-1)	1340-1 531 (600-1)	1420-1 3/4 611 (700-1 3/4)	1520-2 1/4 711 (800-2 1/4)

TDZ/CL Rwy 13R  
 REIL Rws 13L, 22 and 31R  
 HIRL Rws 4-22 and 13R-31L  
 MIRL Rwy 13L-31R

SC-3, 16 MAY 2024 to 13 JUN 2024

SC-3, 16 MAY 2024 to 13 JUN 2024