

FORT LEWIS, WASHINGTON

RNAV (GPS) RWY 15

APCH CRS	Rwy Idg	6124
151°	TDZE	300
	Arprt Elev	301

AL-413 (USA)

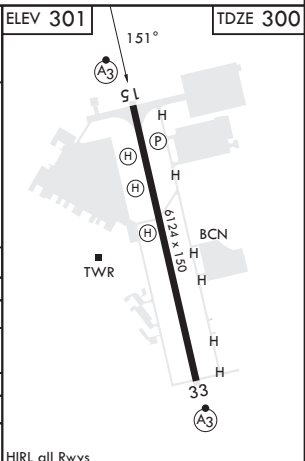
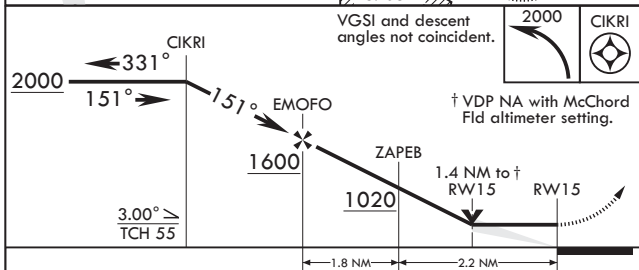
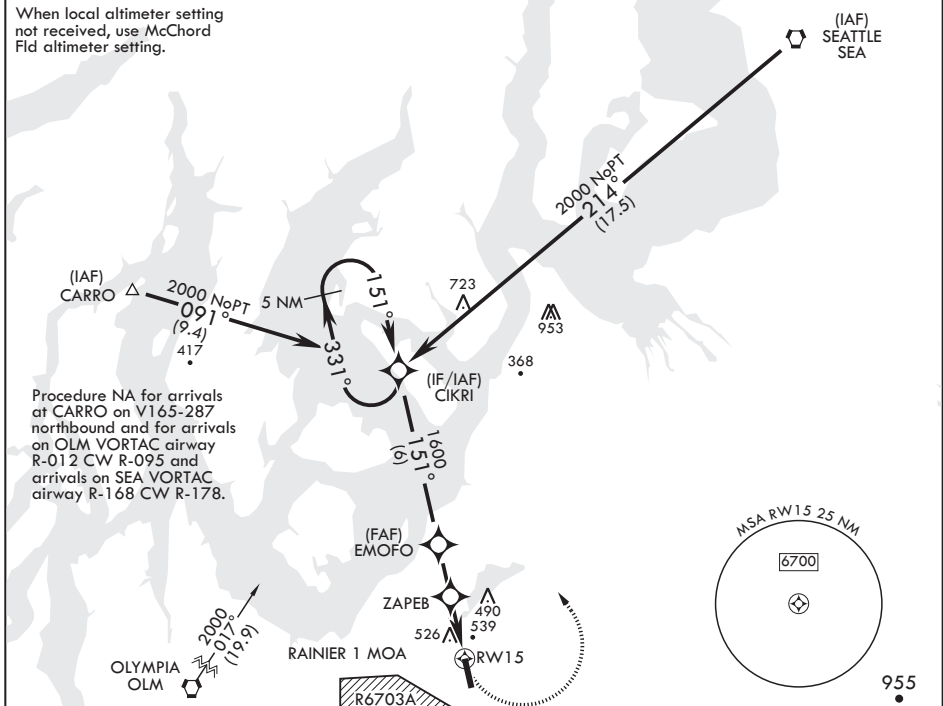
GRAY AAF (JOINT BASE LEWIS MCCHORD) (KGRF)

RNP APCH
 * Circling not authorized W of Rwy 15-33.

SSALR MISSED APPROACH: Climbing left turn to 2000 direct CIKRI and hold.

ATIS	SEATTLE APP CON/DEP CON	TOWER *	GND CON	CLNC DEL	PAR
124.65 306.2	120.1 290.9	119.325 (CTAF) 256.8	121.9 290.2	121.9 290.2	

When local altimeter setting not received, use McChord Fld altimeter setting.



CATEGORY	A	B	C	D
LNAV MDA	800/24 500	(500-½)	800/50 500	(500-1)
C CIRCLING*	840-1 539	(600-1)	840-1½ 539	(600-1½) 920-2 619
MC CHORD FLD ALTIMETER SETTING MINIMUMS				
LNAV MDA	820/24	520	(600-½)	
C CIRCLING*	860-1 559	(600-1)	860-1½ 559	(600-1½) 940-2 639

FORT LEWIS, WASHINGTON
 Amdt 3 10AUG23

47°05'N - 122°35'W GRAY AAF (JOINT BASE LEWIS MCCHORD) (KGRF)

RNAV (GPS) RWY 15

NW-1, 16 MAY 2024 to 13 JUN 2024

NW-1, 16 MAY 2024 to 13 JUN 2024