

FORT LEWIS, WASHINGTON

RNAV (GPS) RWY 33

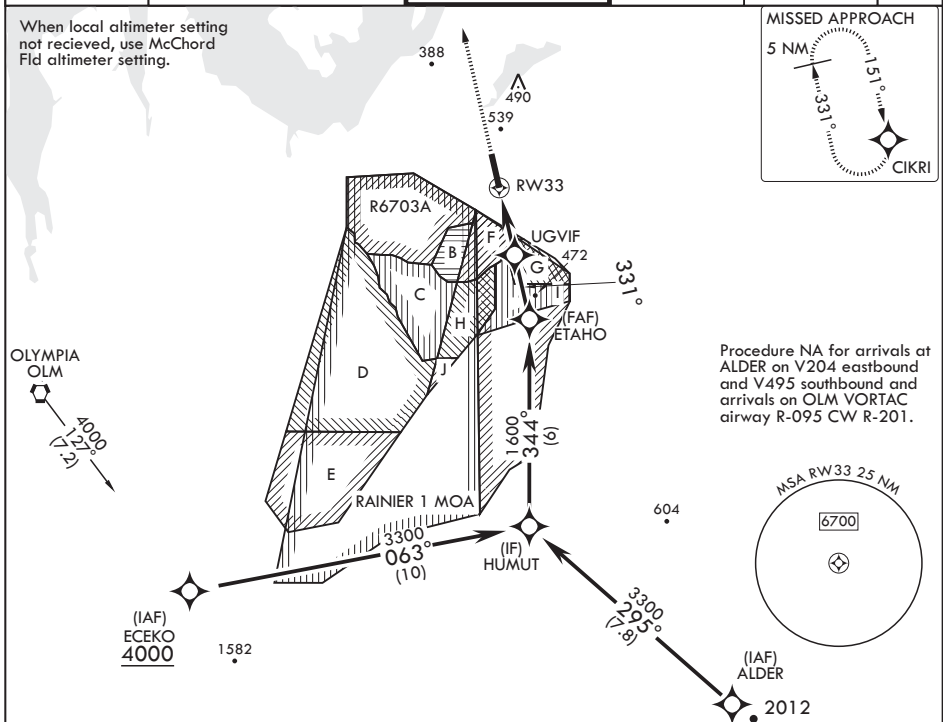
AL-413 (USA)

GRAY AAF (JOINT BASE LEWIS MCCHORD) (KGRF)

APCH CRS	Rwy Idg	6124
331°	TDZE	301
	Arprt Elev	301

RNP APCH	SSALR	MISSED APPROACH: Climb to 2000 direct CIKRI and hold.
*Circling not authorized W of Rwy 15-33.		

ATIS	SEATTLE APP CON/DEP CON	TOWER *	GND CON	CLNC DEL	PAR
124.65 306.2	120.1 290.9	119.325 (CTAF) 256.8	121.9 290.2	121.9 290.2	

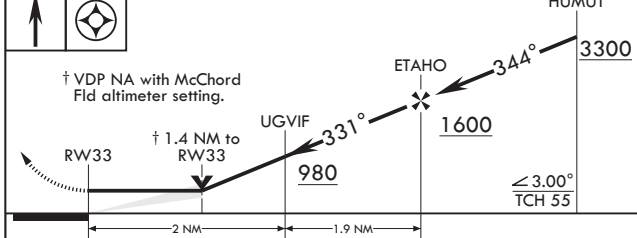


Procedure NA for arrivals at ALDER on V204 eastbound and arrivals on OLM VORTAC and arrivals on OLM VORTAC airway R-095 CW R-201.

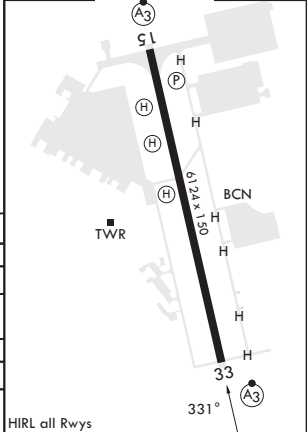
NW-1, 16 MAY 2024 to 13 JUN 2024

NW-1, 16 MAY 2024 to 13 JUN 2024

2000	CIKRI	ELEV 301	TDZE 301
------	-------	----------	----------



CATEGORY	A	B	C	D
LNAV MDA	800-½ 499	(500-½)	800-1 499	(500-1)
CIRCLING*	840-1 539	(600-1)	840-1½ 539	920-2 619 (700-2)
MC CHORD FLD ALTIMETER SETTING MINIMUMS				
LNAV MDA	820-½ 519	(600-½)	820-1 519	(600-1)
CIRCLING*	860-1 559	(600-1)	860-1½ 559	940-2 639 (700-2)



FORT LEWIS, WASHINGTON

47°05'N - 122°35'W GRAY AAF (JOINT BASE LEWIS MCCHORD) (KGRF)

Amdt 3 10AUG23

RNAV (GPS) RWY 33