

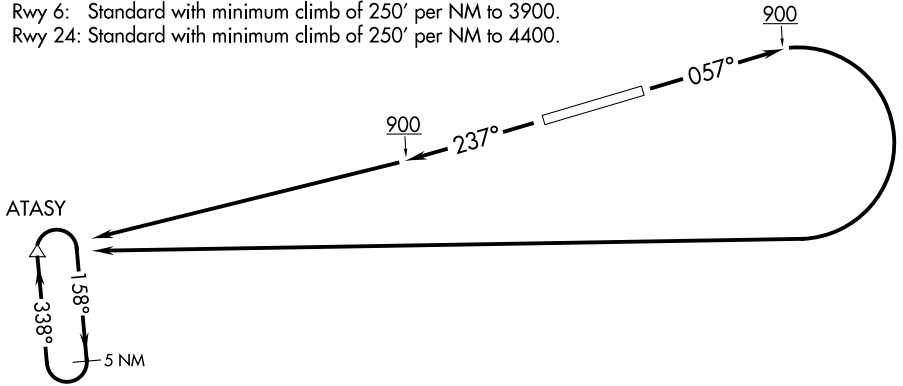
SEATTLE CENTER
124.2 317.6

TAKEOFF OBSTACLE NOTES

- Rwy 6: Antenna 9' from DER, 344' left of centerline, 16' AGL/390' MSL. Trees beginning 190' from DER, 12' right of centerline, up to 27' AGL/397' MSL.
- Rwy 24: Trees, buildings, and airport beacon on tower beginning 53' from DER, 328' right of centerline, up to 71' AGL/432' MSL. Trees 434' from DER, 267' left of centerline, 26' AGL/381' MSL. Vehicle on road 529' from DER, 83' left of centerline, 13' AGL/370' MSL. Trees beginning 2525' from DER, 72' right of centerline, up to 141' AGL/482' MSL.

TAKEOFF MINIMUMS

- Rwy 6: Standard with minimum climb of 250' per NM to 3900.
- Rwy 24: Standard with minimum climb of 250' per NM to 4400.



NW-1, 16 MAY 2024 to 13 JUN 2024

NW-1, 16 MAY 2024 to 13 JUN 2024

NOTE: RNAV 1.

NOTE: GPS required.

NOTE: Chart not to scale.

DEPARTURE ROUTE DESCRIPTION

TAKEOFF RUNWAY 6: Climb heading 057° to 900, then climbing right turn to 5000 direct ATASY and hold, continue climb-in-hold to 5000, when authorized by ATC, continue climb-in-hold to 6000, thence. . . .

TAKEOFF RUNWAY 24: Climb heading 237° to 900, then climb to 5000 direct ATASY and hold, continue climb-in-hold to 5000, when authorized by ATC, continue climb-in-hold to 6000, thence. . . .

. . . .Expect filed altitude 10 minutes after departure.