

APP CRS	Rwy Idg	5500
035°	TDZE	5757
	Apt Elev	5762

RNAV (GPS) RWY 3

PERRY STOKES (TAD)

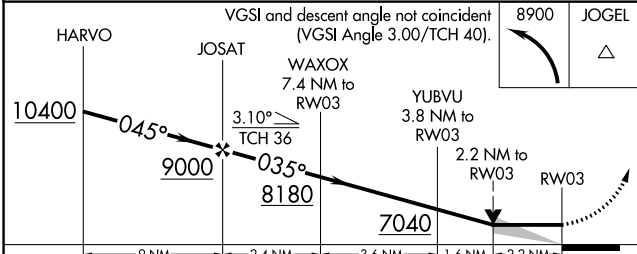
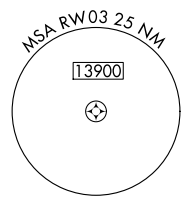
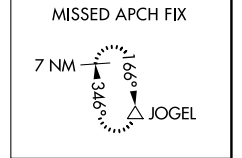
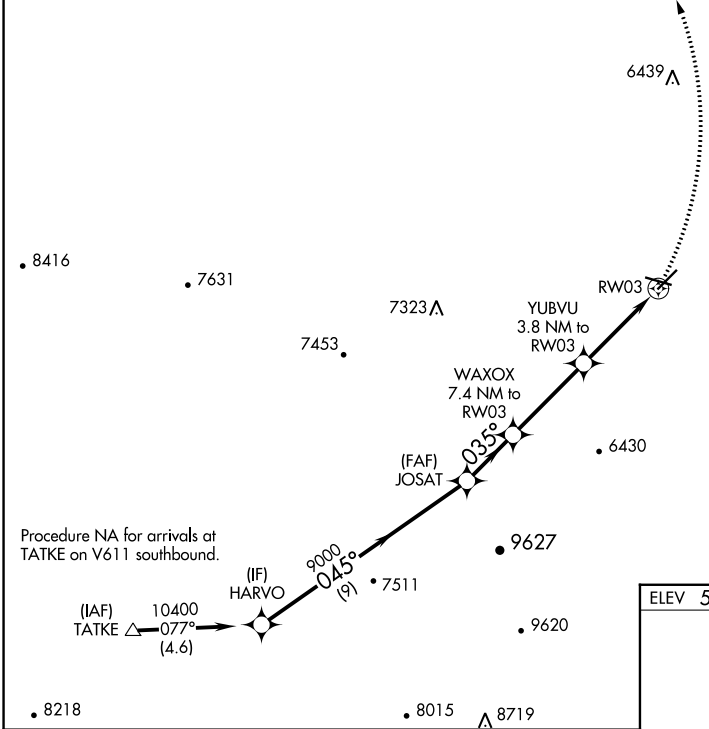
RNP APCH.

⚠ Circling NA to Rwy 9 and 27. VDP NA when using Pueblo Meml altimeter setting. When local altimeter setting not received, use Pueblo Meml altimeter setting and increase all MDAs 300 feet; increase LNAV Cats A/B visibility ¼ SM and Cats C/D visibility 1 SM and Circling Cats A/B visibility ¼ SM, Cat C 1 SM, and Cat D ½ SM.

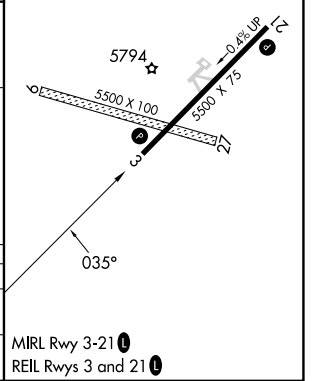
MISSED APPROACH: Climbing left turn to 8900 direct JOGEL and hold.

ASOS	DENVER CENTER
119.025	128.375 379.95

UNICOM
122.8 (CTAF) 0



ELEV 5762	TDZE 5757
-----------	-----------



CATEGORY	A	B	C	D
LNAV MDA	6500-1 743 (800-1)	6500-1¼ 743 (800-1¼)	6500-2	743 (800-2)
CIRCLING	6500-1 738 (800-1)	6500-1¼ 738 (800-1¼)	6500-2 738 (800-2)	6560-2½ 798 (800-2½)

SW-1, 16 MAY 2024 to 13 JUN 2024

SW-1, 16 MAY 2024 to 13 JUN 2024