

HI-TACAN X RWY 32L

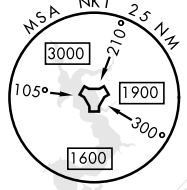
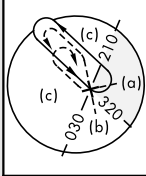
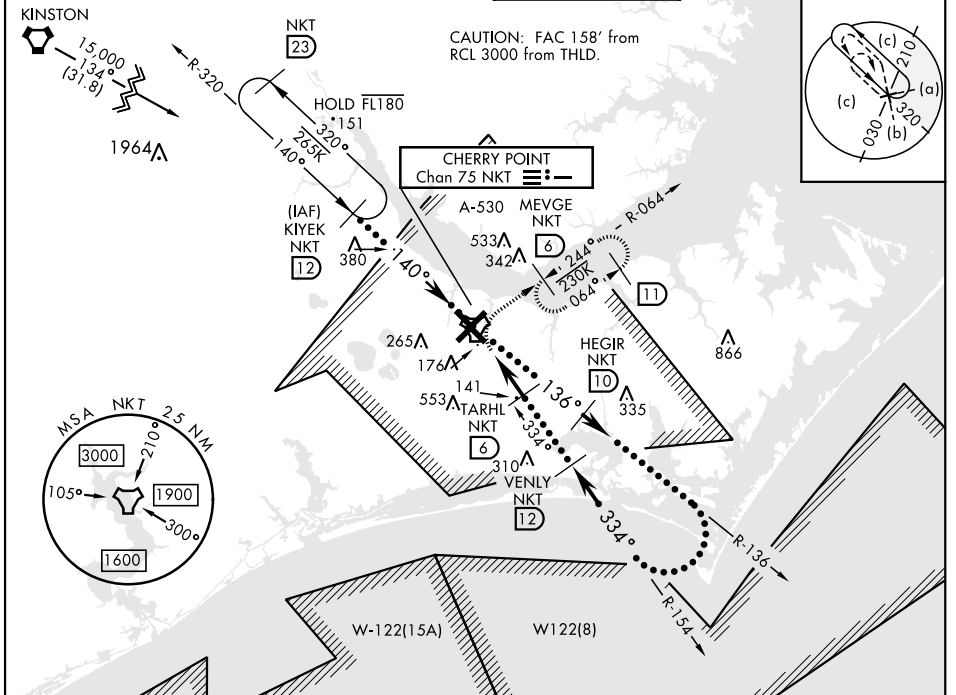
TACAN NKT Chan 75	APCH CRS 334°	Rwy Idg TDZE 26 Arprt Elev 29
-----------------------------	-------------------------	---

[USN]

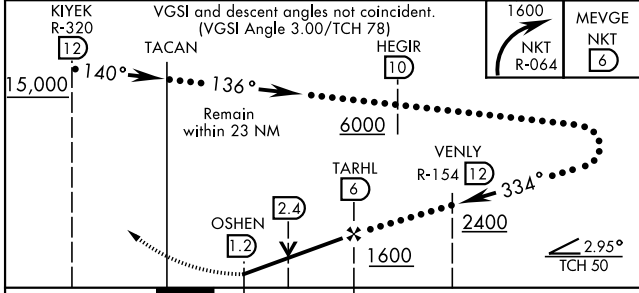
CHERRY POINT MCAS (CUNNINGHAM FLD) (KNKT)

▼ * When ALS inop, increase vis to 1½ miles.
ALS-F-1 (A1)
MISSED APPROACH: Climbing right turn to 1600, intercept NKT R-064 to MEVGE and hold.

ATIS 127.475 244.875	(E) 119.75 (E) 132.575 (W) 119.35	APP CON 360.775 (abv 2600') 299.6 (at/blw 2600') 377.175 (N) 124.1 268.7	TOWER 121.3 340.2	GND CON 128.625 239.025	CLNC DEL 125.95 316.125	ASR/ PAR
--	--	---	-----------------------------	---	---	-------------

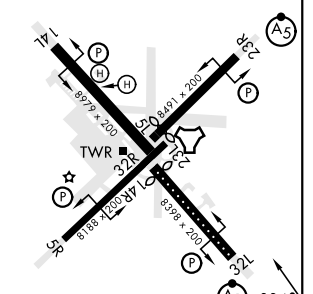


EMERG SAFE ALT 100 NM 4100



ELEV 29	D	TDZE 26
---------	---	---------

Rwy 32R, 23L, 14R, 5L marked in center mat area.



CATEGORY	C	D	E
S-32L *	460-¾	435 (500-¾)	
CIRCLING	580-1½ 551 (600-1½)	580-2 551 (600-2)	700-2½ 671 (700-2½)

HIRL all rwys
REIL Rwy 5L and 14R
Rwy 5L-23R Idg 7552'
Rwy 14R-32L Idg 7551'

CHERRY POINT, NORTH CAROLINA 34° 54' N-76° 53' W CHERRY POINT MCAS (CUNNINGHAM FLD) (KNKT)

Amdt 7 02NOV23

HI-TACAN X RWY 32L

SE-2, 16 MAY 2024 TO 13 JUN 2024

SE-2, 16 MAY 2024 TO 13 JUN 2024