

CHERRY POINT, NORTH CAROLINA

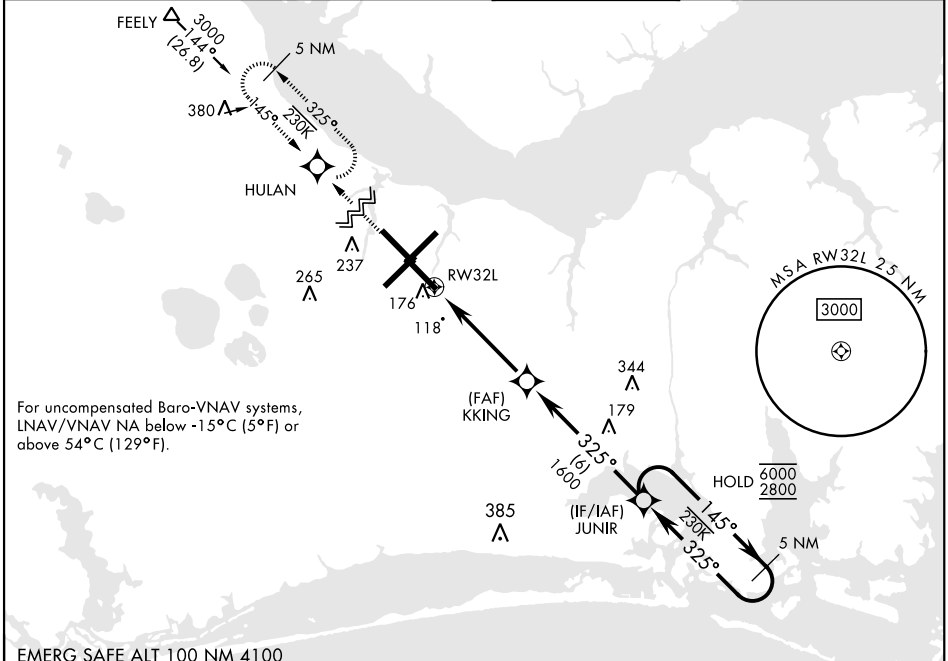
# RNAV (GPS) RWY 32L

WAAS Chan <b>54304</b> <b>W32A</b>	APCH CRS <b>325°</b>	Rwy ldg TDZE <b>26</b> Arprt Elev <b>29</b>	<b>7551</b>
--	-------------------------	---	-------------

[USN] CHERRY POINT MCAS (CUNNINGHAM FLD) (KNKT)

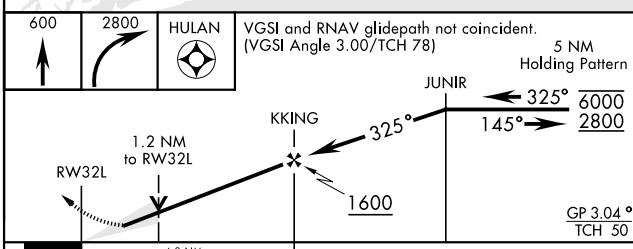
RNP APCH ▼ *When ALS inop, increase vis to ¾ mile. **When ALS inop, increase vis to 1 mile. ***When ALS inop, increase CAT AB vis to 1 mile, CAT CD vis to 1¼ miles.	ALSIF-1 	MISSED APPROACH: Climb to 600 then climbing right turn to 2800 direct HULAN and hold.
--	-------------	--

ATIS <b>127.475</b> <b>244.875</b>	(E) <b>119.75</b> (E) <b>132.575</b> (W) <b>119.35</b>	APP CON <b>360.775</b> (abv 2600') <b>299.6</b> (at/blw 2600') <b>377.175</b> (N) <b>124.1</b> <b>268.7</b>	TOWER <b>121.3</b> <b>340.2</b>	GND CON <b>128.625</b> <b>239.025</b>	CLNC DEL <b>125.95</b> <b>316.125</b>	ASR/ PAR
--	--	--	------------------------------------	---	---	-------------



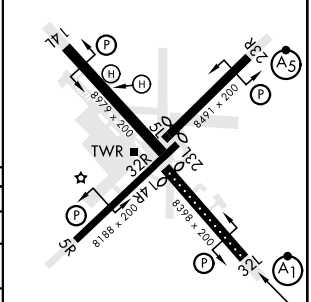
For uncompensated Baro-VNAV systems, LNAV/VNAV NA below -15°C (5°F) or above 54°C (129°F).

EMERG SAFE ALT 100 NM 4100



ELEV <b>29</b>	<b>D</b>	TDZE <b>26</b>
----------------	----------	----------------

Rwy 32R, 23L, 14R, 5L marked in center mat area.



CATEGORY	A	B	C	D
LPV DA*		225-½	200	(200-½)
LNAV/ VNAV DA**		400-⅝	375	(400-⅝)
LNAV MDA***	460-½	435 (500-½)	460-¾	435 (500-¾)
<b>C</b> CIRCLING	580-1	551 (600-1)	580-1½	580-2
			551 (600-1½)	551 (600-2)

HIRL all rwys  
REIL Rwy 5L and 14R  
Rwy 5L-23R ldg 7552'  
Rwy 14R-32L ldg 7551'

CHERRY POINT, NORTH CAROLINA 34° 54'N-76° 53'W CHERRY POINT MCAS (CUNNINGHAM FLD) (KNKT)

Amdt 8 02NOV23

# RNAV (GPS) RWY 32L

SE-2, 16 MAY 2024 to 13 JUN 2024

SE-2, 16 MAY 2024 to 13 JUN 2024