

RNAV (GPS) RWY 5R

WAAS Chan 71199 W05A	APCH CRS 054°	Rwy Idg TDZE Arprt Elev 8188 27 29
--	-------------------------	--

[USN]

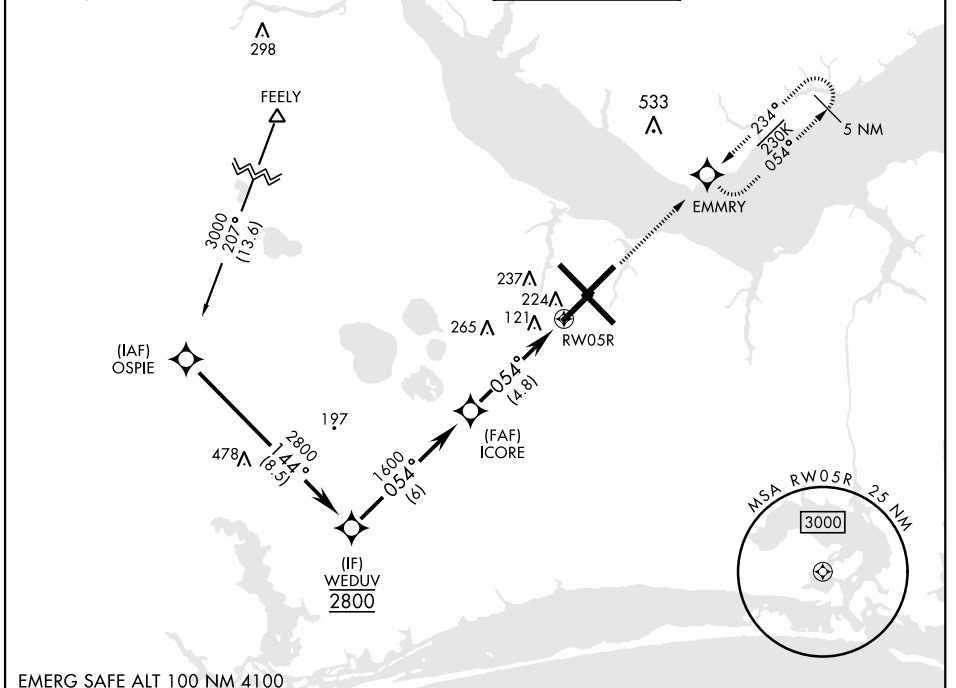
CHERRY POINT MCAS (CUNNINGHAM FLD) (KNKT)

RNP APCH

▼ For uncompensated Baro-VNAV systems, LNAV/VNAV NA below -15°C (5°F) or above 54°C (129°F).

MISSED APPROACH: Climb to 600, then climbing left turn to 2600 direct EMMRY and hold. Continue climb in hold to 2600.

ATIS 127.475 244.875	APP CON (E) 119.75 360.775 (abv 2600') (E) 132.575 299.6 (at/blw 2600') (W) 119.35 377.175 (N) 124.1 268.7	TOWER 121.3 340.2	GND CON 128.625 239.025	CLNC DEL 125.95 316.125	ASR/ PAR
--	---	------------------------------------	---	---	-------------



SE-2, 16 MAY 2024 to 13 JUN 2024

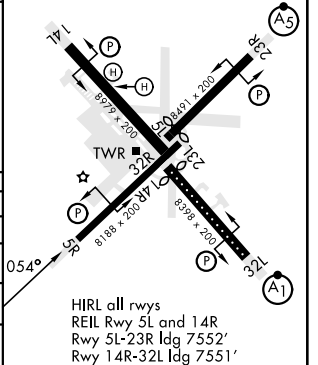
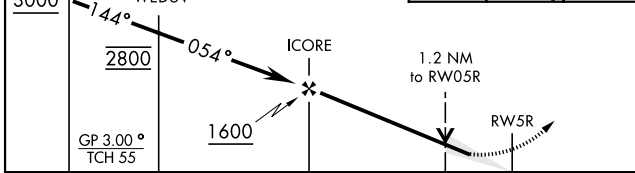
SE-2, 16 MAY 2024 to 13 JUN 2024

EMERG SAFE ALT 100 NM 4100

VGSi and RNAV glidepath not coincident (VGSi Angle 3.00/TCH 73). OSPIE 3000 WEDUV 2800 GP 3.00° TCH 55	600	2600	EMMRY

ELEV	29	TDZE	27
------	----	------	----

Rwy 32R, 23L, 14R, 5L marked in center mat area.



CATEGORY	A	B	C	D
LPV DA		226-¾	200	(200-¾)
LNAV/VNAV DA		398-1	372	(400-1)
LNAV MDA	480-1	454 (500-1)	480-1¾	454 (500-1¾)
C CIRCLING	580-1	551 (600-1)	580-1½	580-2 551 (600-1½)

RNAV (GPS) RWY 5R