

ALTUS, OKLAHOMA

# ILS or LOC RWY 18L

ALTUS AFB (KLTS)

LOC I-RUK <b>110.55</b>	APCH CRS <b>175°</b>	Rwy Idg TDZE Arprt Elev <b>9001 1382 1382</b>
----------------------------	-------------------------	--

AL-482 [USAF]

DME or RADAR required.

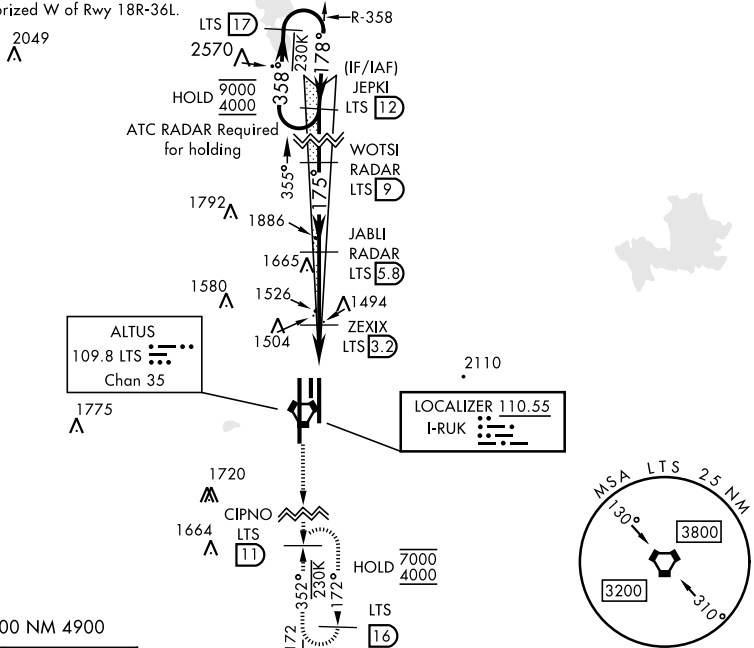
SALSF  
A2

MISSED APPROACH: Climb to 4000, intercept LTS VORTAC R-172 to CIPNO and hold.

When ALS inop, increase RVR to 55 and vis to 1 mile.  
When ALS inop, increase CAT AB RVR to 55, vis to 1 mile, CAT CDE vis to 1 1/8 miles.

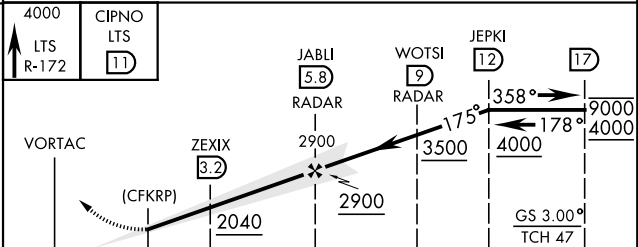
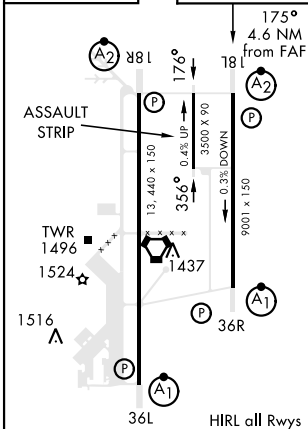
ATIS ★ <b>109.8 273.5</b>	FORT WORTH CENTER <b>133.5 350.35</b>	APP CON <b>125.1 353.7</b>	TOWER ★ <b>119.65 254.4</b>	GND CON <b>121.85 275.8</b>	CLNC DEL <b>120.65 284.7</b>
------------------------------	--	-------------------------------	--------------------------------	--------------------------------	---------------------------------

\*\*\*Circling not authorized W of Rwy 18R-36L.



EMERG SAFE ALT 100 NM 4900

ELEV 1382	TDZE 1382
-----------	-----------



CATEGORY	A	B	C	D	E
S-ILS 18L	1582/40		200	(200-3/4)	
S-LOC 18L*	1760/40		378	(400-3/4)	
*** CIRCLING	1780-1 398 (400-1)	1840-1 458 (500-1)	1880-1 1/2 498 (500-1 1/2)	2080-2 1/4 698 (700-2 1/4)	2180-2 3/4 798 (800-2 3/4)
WITHOUT LAST STEPDOWN FIX					
S-LOC 18L**	2040/40	658 (700-3/4)	2040-1 1/2	658	(700-1 1/2)
*** CIRCLING	2040-1	658 (700-1)	2040-1 1/2 658 (700-1 1/2)	2080-2 1/4 698 (700-2 1/4)	2180-2 3/4 798 (800-2 3/4)

ALTUS, OKLAHOMA  
Amdt 5 20APR23

34° 40' N-99° 16' W

ALTUS AFB (KLTS)

# ILS or LOC RWY 18L

SC-1, 16 MAY 2024 to 13 JUN 2024

SC-1, 16 MAY 2024 to 13 JUN 2024