

ALTUS, OKLAHOMA

# RNAV (GPS) Z RWY 18L

APCH CRS	Rwy Idg	<b>9001</b>
<b>175°</b>	TDZE	<b>1382</b>
	Arpt Elev	<b>1382</b>

AL-482 (USAF)

ALTUS AFB (KLTS)

RNP APCH. DME/DME RNP-0.3 NA

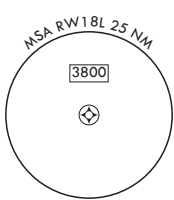
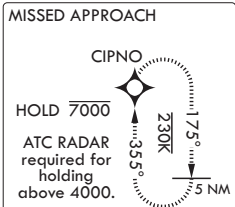
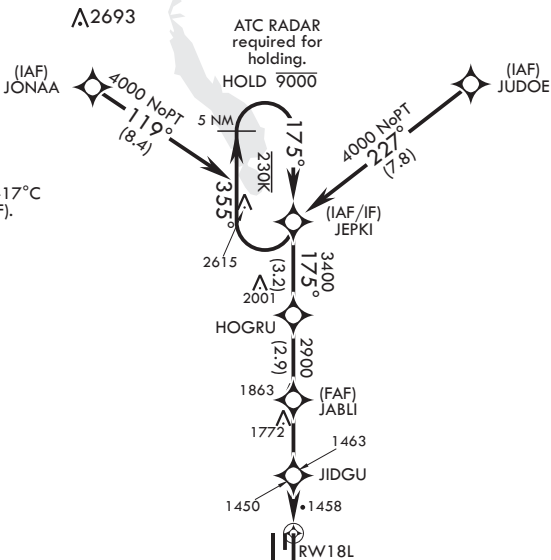


MISSED APPROACH: Climb to 4000 direct CIPNO and hold.

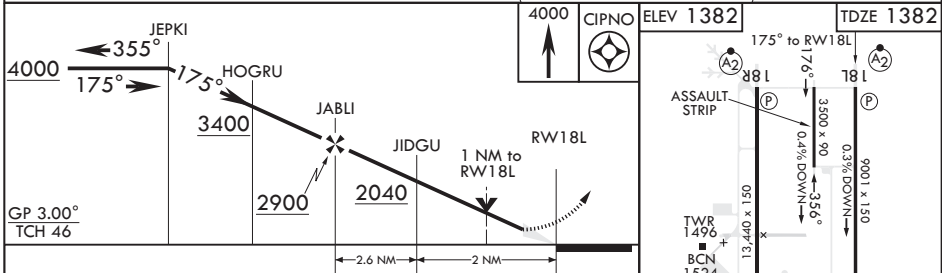
\* When ALS inop, increase RVR to 55, vis to 1 mile.  
\*\* Circling NA W of Rwy 18R-36L.

ATIS*	FORT WORTH CENTER	APP CON	TOWER*	GND CON	CLNC DEL
<b>109.8 273.5</b>	<b>133.5 350.35</b>	<b>125.1 353.7</b>	<b>119.65 254.4</b>	<b>121.85 275.8</b>	<b>120.65 284.7</b>

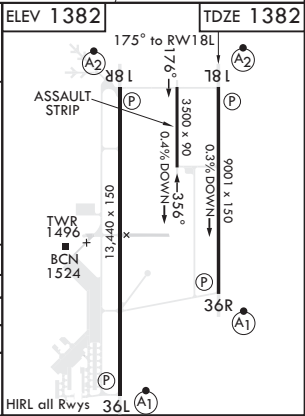
For uncompensated Baro-VNAV systems, procedure NA below -17°C or above 54°C (130°F).



EMERG SAFE ALT 100 NM 4900



CATEGORY	A	B	C	D	E
LNAV/VNAV DA	1632/40		250	(300-¾)	
LNAV MDA*	1760/40		378	(400-¾)	
<b>C</b> CIRCLING**	1780-1 398 (400-1)	1840-1 458 (500-1)	1880-1½ 498 (500-1½)	2080-2¼ 698 (700-2¼)	2180-2¾ 798 (800-2¾)



ALTUS, OKLAHOMA

34°40'N - 99°16'W

ALTUS AFB (KLTS)

Amdt 3 14JUL22  
TERPS

# RNAV (GPS) Z RWY 18L

SC-1, 16 MAY 2024 to 13 JUN 2024

SC-1, 16 MAY 2024 to 13 JUN 2024