

ALTUS, OKLAHOMA

RNAV (GPS) Z RWY 36R

APCH CRS 355°	Rwy Idg TDZE Arprt Elev	9001 1361 1382
-------------------------	-------------------------------	---

AL-482 (USAF)

ALTUS AFB (KLTS)

RNP APCH. DME/DME RNP-0.3 NA

ALSF-1

MISSED APPROACH: Climb to 4000 direct JEPKI and hold.

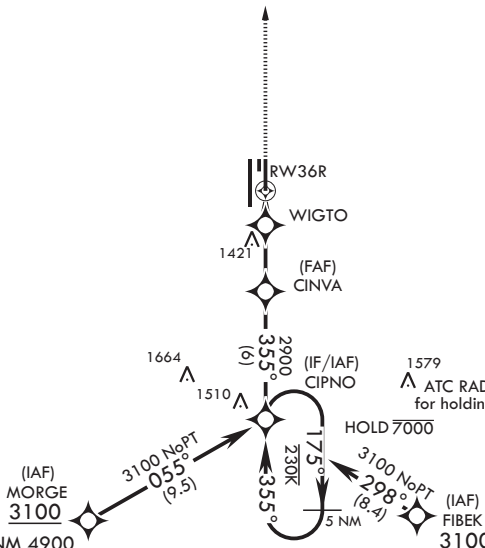
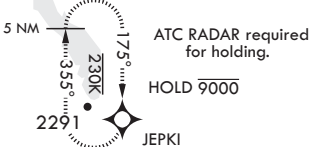
* When ALS inop increase RVR to 40, vis to 3/4 mile.
 ** When ALS inop increase CAT AB RVR to 35, vis to 1 mile; CAT CDE RVR 50, vis to 1 mile.



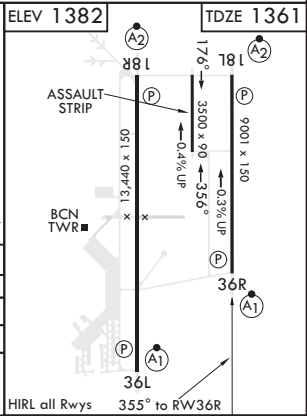
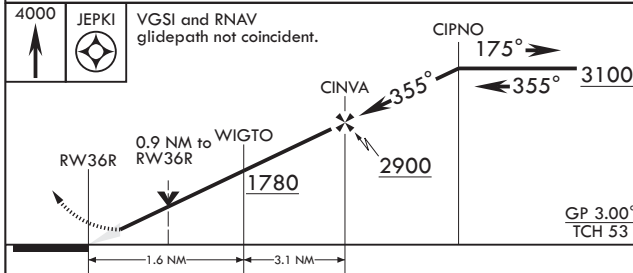
ATIS* 109.8 273.5	FORT WORTH CENTER 133.5 350.35	APP CON 125.1 353.7	TOWER* 119.65 254.4	GND CON 121.85 275.8	CLNC DEL 120.65 284.7
-----------------------------	--	-------------------------------	-------------------------------	--------------------------------	---------------------------------

*** Circling NA W of Rwy 36L-18R.

For uncompensated Baro-VNAV systems, procedure NA below -17°C (2°F) or above 54°C (130°F).



EMERG SAFE ALT 100 NM 4900



CATEGORY	A	B	C	D	E
LNNAV/VNAV DA*	1611/24		250	(300-½)	
LNNAV MDA**	1700/24	339 (400-½)	1700/26	339 (400-½)	
C CIRCLING***	1780-1 398 (400-1)	1840-1 458 (500-1)	1880-1½ 498 (500-1½)	2080-2¼ 698 (700-2¼)	2180-2¾ 798 (800-2¾)

ALTUS, OKLAHOMA

34°40'N - 99°16'W

ALTUS AFB (KLTS)

Amdt 3 14JUL22

RNAV (GPS) Z RWY 36R

SC-1, 16 MAY 2024 to 13 JUN 2024

SC-1, 16 MAY 2024 to 13 JUN 2024