

# VOR or TACAN-C

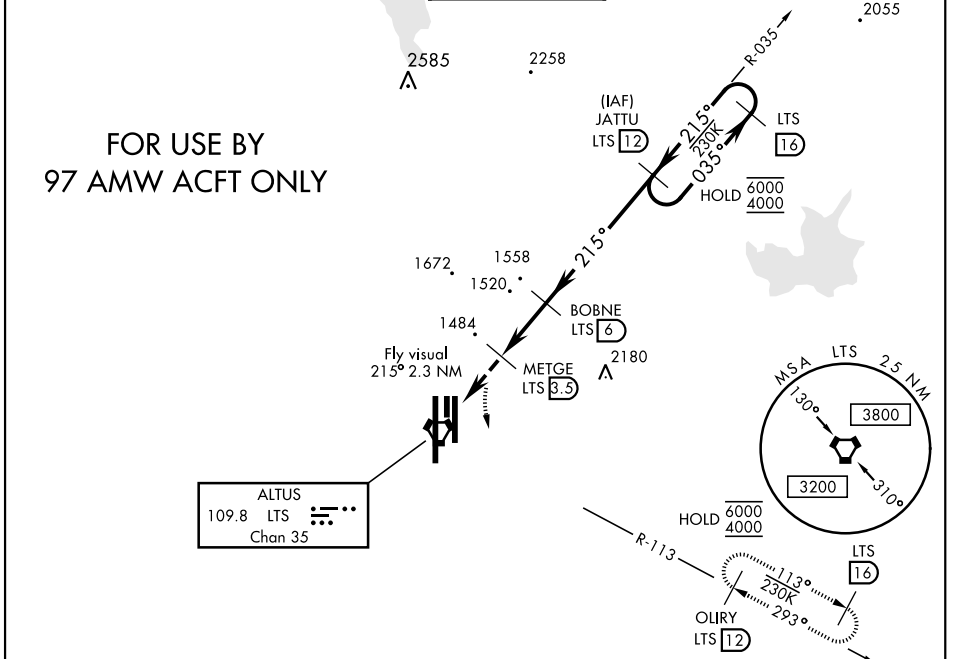
VORTAC LTS <b>109.8</b> Chan <b>35</b>	APCH CRS <b>215°</b>	Rwy Idg TDZE Arprt Elev <b>N/A</b> <b>N/A</b> <b>1382</b>
--	-------------------------	--

AL-482 [USAF]

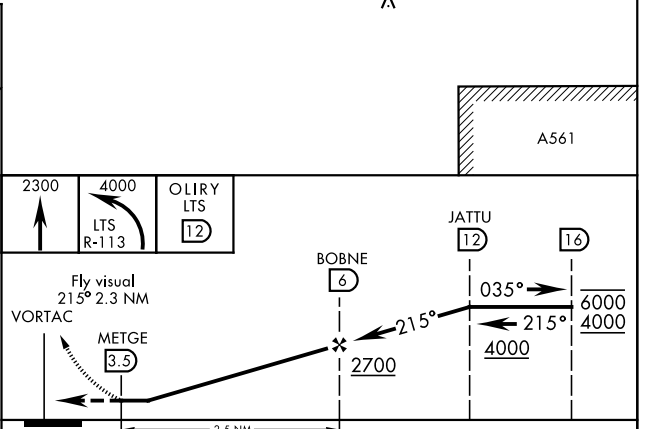
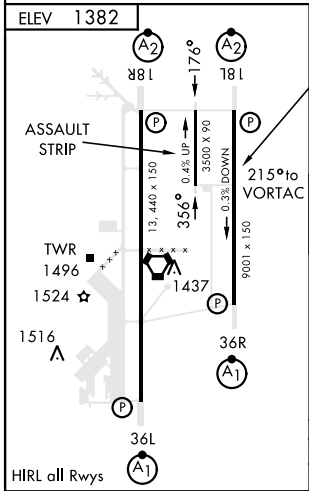
ALTUS AFB (KLTS)

RADAR, DME required.	MISSED APPROACH: Climb to 2300, then climbing left turn to 4000 intercept LTS R-113 to OLIRY and hold.
----------------------	--

ATIS ★ <b>109.8 273.5</b>	FORT WORTH CENTER <b>133.5 350.35</b>	APP CON <b>125.1 353.7</b>	TOWER ★ <b>119.65 254.4</b>	GND CON <b>121.85 275.8</b>	CLNC DEL <b>120.65 284.7</b>
------------------------------	--	-------------------------------	--------------------------------	--------------------------------	---------------------------------



EMERG SAFE ALT 100 NM 4900



CATEGORY	D	E
<input checked="" type="checkbox"/> CIRCLING	2080-3 698 (700-3)	2180-3 798 (800-3)

# VOR or TACAN-C

SC-1, 16 MAY 2024 to 13 JUN 2024

SC-1, 16 MAY 2024 to 13 JUN 2024