

(SEATO.SEATO4) 23334
SEATO FOUR ARRIVAL

AL-488 (FAA)

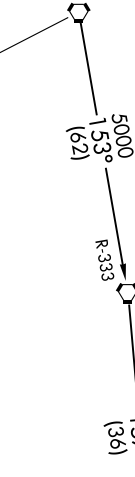
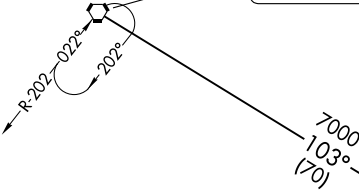
TRAVIS AFB (KSUU)
 FAIRFIELD, CALIFORNIA

TRAVIS APP CON
 126.6 281.45 (N)
 119.9 322.325 (S)
 D-ATIS
 135.55 292.125

RED BLUFF
 115.7 RBL
 Chan 104

MENDOCINO
 112.3 ENI
 Chan 70

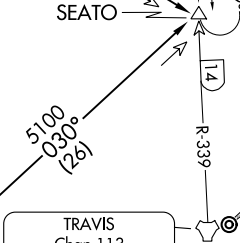
WILLIAMS
 114.4 ILA
 Chan 91



SCAGGS ISLAND
 112.1 SGD
 Chan 58

TRAVIS
 Chan 113
 SUU
 (116.6)

LOCALIZER 110.1
 I-SUU



NOTE: RADAR and DME required.

SEATO

NOTE: Chart not to scale.

ARRIVAL ROUTE DESCRIPTION

MENDOCINO TRANSITION (ENI.SEATO4): From over ENI VORTAC via ENI R-103 to SEATO INT. Thence . . .

RED BLUFF TRANSITION (RBL.SEATO4): From over RBL VORTAC via RBL R-153 and ILA R-333 to ILA VORTAC, then via ILA R-157 to SEATO INT. Thence . . .

SCAGGS ISLAND TRANSITION (SGD.SEATO4): From over SGD VORTAC via SGD R-030 to SEATO INT. Thence . . .

. . . . From over SEATO INT:

RWY 3L/R: Expect RADAR vectors for ILS or LOC RWY 3L approach.

RWY 21L/R: Expect RADAR vectors for ILS or LOC RWY 21L approach.

LOST COMMUNICATIONS:

RWY 3L via SEATO then TACAN RWY 3L.

RWY 21R via SEATO then TACAN RWY 21R.

SEATO FOUR ARRIVAL
 (SEATO.SEATO4) 12DEC13

FAIRFIELD, CALIFORNIA
 TRAVIS AFB (KSUU)

SW-2, 16 MAY 2024 to 13 JUN 2024

SW-2, 16 MAY 2024 to 13 JUN 2024