

(ALPIN4.KICNE) 23334

# ALPIN FOUR DEPARTURE

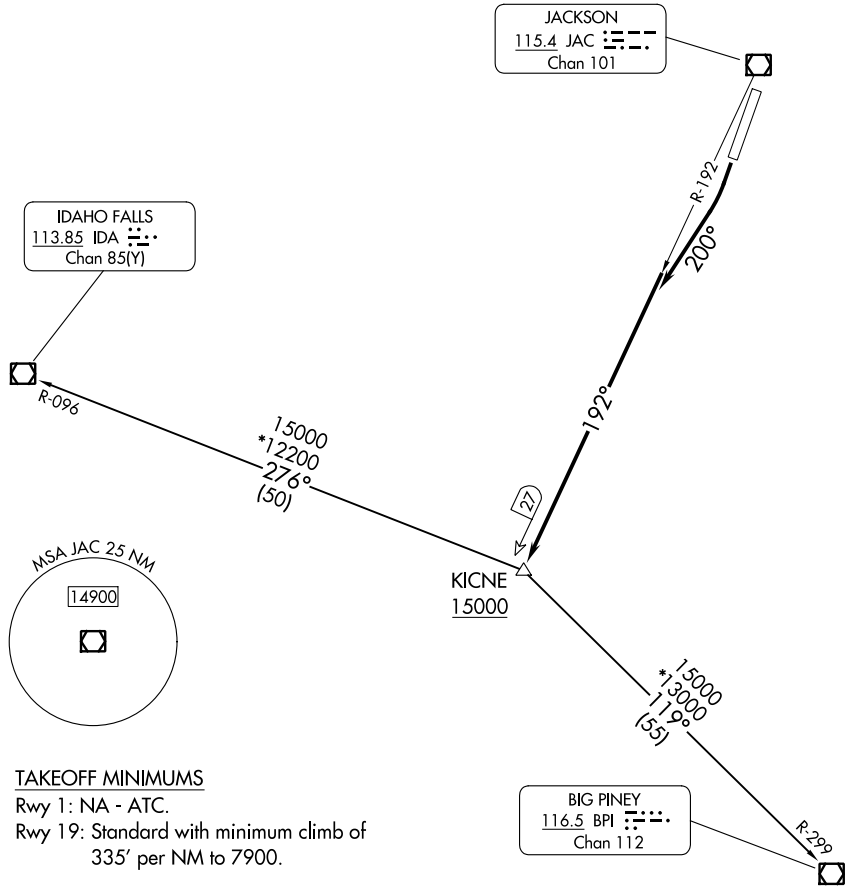
AL-504 (FAA)

JACKSON HOLE (JAC)

JACKSON, WYOMING

SALT LAKE CENTER  
133.25 285.6

**TOP ALTITUDE:  
AS ASSIGNED BY ATC**



### TAKEOFF MINIMUMS

Rwy 1: NA - ATC.

Rwy 19: Standard with minimum climb of 335' per NM to 7900.

NOTE: Chart not to scale.

### DEPARTURE ROUTE DESCRIPTION

TAKEOFF RUNWAY 19: Climb on heading 200° to intercept JAC VOR/DME R-192 to KICNE INT/JAC 27 DME, cross KICNE INT at or above 15000. Then proceed on assigned transition/route. Expect further clearance to filed altitude 10 minutes after departure.

BIG PINEY TRANSITION (ALPIN4.BPI): From over KICNE INT on BPI R-299 to BPI VOR/DME.

IDAHO FALLS TRANSITION (ALPIN4.IDA): From over KICNE INT on IDA R-096 to IDA VOR/DME.

# ALPIN FOUR DEPARTURE

(ALPIN4.KICNE) 20APR23

JACKSON, WYOMING  
JACKSON HOLE (JAC)

NW-1, 16 MAY 2024 to 13 JUN 2024

NW-1, 16 MAY 2024 to 13 JUN 2024