

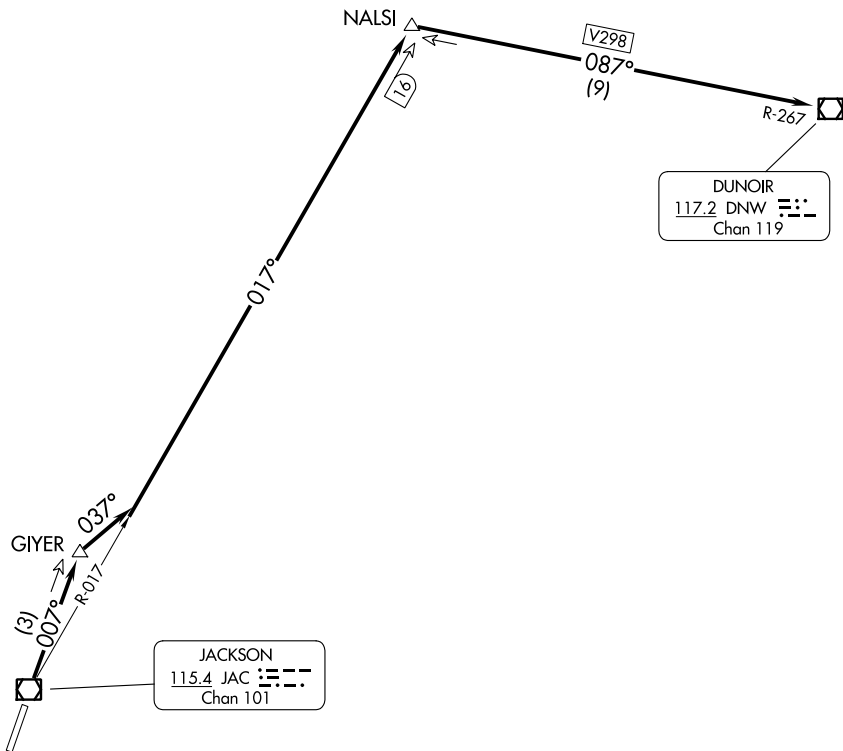
(GEYSR6.DNW) 23334

# GEYSER SIX DEPARTURE (OBSTACLE)

AL-504 (FAA)

JACKSON HOLE (JAC)  
JACKSON, WYOMING

SALT LAKE CENTER  
133.25 285.6  
CTAF  
118.075  
UNICOM  
122.95



NW-1, 16 MAY 2024 to 13 JUN 2024

NW-1, 16 MAY 2024 to 13 JUN 2024

NOTE: DME required.

### TAKEOFF MINIMUMS

Rwy 1: Standard with minimum climb of 234' per NM to 12400.

Rwy 19: NA - ATC.

NOTE: Chart not to scale.

### DEPARTURE ROUTE DESCRIPTION

TAKEOFF RUNWAY 1: Climb to 12400 on JAC R-007 to GIYER/JAC 3 DME, and right turn heading 037° to intercept JAC R-017 to NALS INT/JAC 16 DME then right turn to intercept DNW R-267 to DNW VOR/DME.

# GEYSER SIX DEPARTURE (OBSTACLE)

(GEYSR6.DNW) 02DEC21

JACKSON, WYOMING  
JACKSON HOLE (JAC)