

# ILS Z or LOC Z RWY 19 JACKSON HOLE (JAC)

LOC/DME I-JAC <b>109.1</b> Chan <b>28</b>	APP CRS <b>187°</b>	Rwy Idg <b>6300</b> TDZE <b>6451</b> Apt Elev <b>6451</b>
---	------------------------	---

DME required for LOC only. RNAV 1-GPS required. RADAR required for procedure entry at MOSS.

**▼** Circling NA for Cats A, B, and C east of Rwy 1-19. Inop table does not apply to S-ILS 19\*. Circling NA for Cat D. For inop ALS increase S-LOC 19# Cats C and D visibility to RVR 4500.

**▲** -22°C

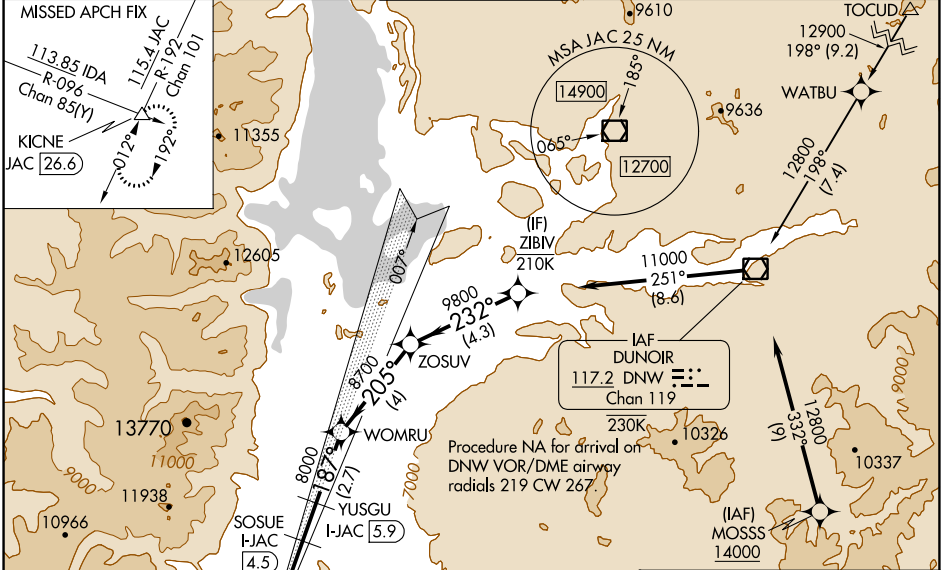
MALS

MISSED APPROACH: Climb to 6900 then climbing right turn to 14000 on JAC VOR/DME R-192 to KICNE INT/JAC 26.6 DME and hold, continue climb-in-hold to 14000.

\*Missed approach requires minimum climb of 225 feet per NM to 9400; if unable to meet gradient, see ILS Y or LOC Y RWY 19.

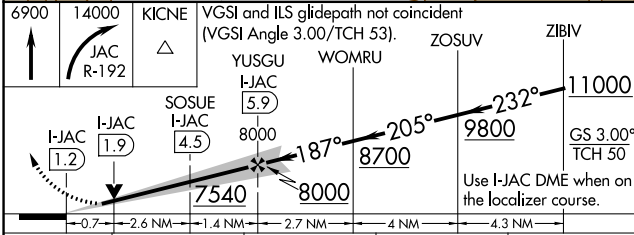
#Missed approach requires minimum climb of 234 feet per NM to 9600; if unable to meet gradient, see ILS Y or LOC Y RWY 19.

D-ATIS <b>120.625</b>	SALT LAKE CENTER <b>133.25 285.6</b>	JACKSON TOWER* <b>118.075 (CTAF)</b>	GND CON <b>124.55</b>	UNICOM <b>122.95</b>
--------------------------	---	---	--------------------------	-------------------------

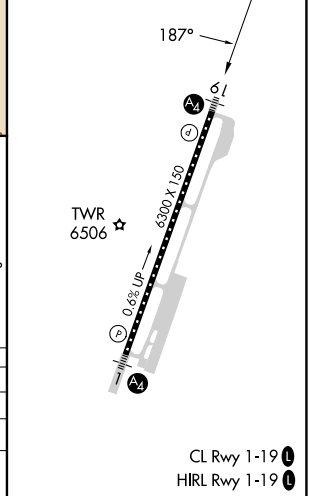


ELEV 6451	D	TDZE 6451
-----------	---	-----------

JACKSON 115.4 JAC Chan 101	LOCALIZER I-JAC Chan 28
----------------------------------	-------------------------------



CATEGORY	A	B	C	D
S-ILS 19*		6651/40	200 (200-¾)	
S-LOC 19#		6720/40	269 (300-¾)	
CIRCLING	6840-1 389 (400-1)	6960-1 509 (600-1)	7440-3 989 (1000-3)	NA



NW-1, 16 MAY 2024 to 13 JUN 2024

NW-1, 16 MAY 2024 to 13 JUN 2024