

APP CRS	Rwy Idg	6300
006°	TDZE	6431
	Apt Elev	6451

RNAV (RNP) Y RWY 1

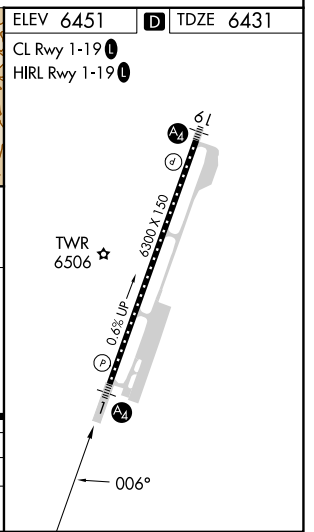
JACKSON HOLE (JAC)

RNP AR APCH.	Inop table does not apply. For uncompensated Baro-VNAV systems, procedure NA below -27°C or above 54°C.	MALS	MISSED APPROACH: Climb to 14000 on track 007° to QUIRT and track 088° to DNW VOR/DME and hold, continue climb-in-hold to 14000.
--------------	--	------	---

D-ATIS 120.625	SALT LAKE CENTER 133.25 285.6	JACKSON TOWER* 118.075 (CTAF) 1	GND CON 124.55	UNICOM 122.95
--------------------------	---	---	--------------------------	-------------------------



VUGUY	LIYET	NECPI	YONUL	JEVIM	WIDGA	RWY 1
14000	11600	11200	10500	9900	8600	
GP 3.00°						
TCH 50						
12 NM	2 NM	2.4 NM	2.4 NM	7.9 NM	6.7 NM	
CATEGORY	A	B	C	D		
RNP 0.30 DA	7373-4			942 (1000-4)		



AUTHORIZATION REQUIRED

NW-1, 16 MAY 2024 to 13 JUN 2024

NW-1, 16 MAY 2024 to 13 JUN 2024