

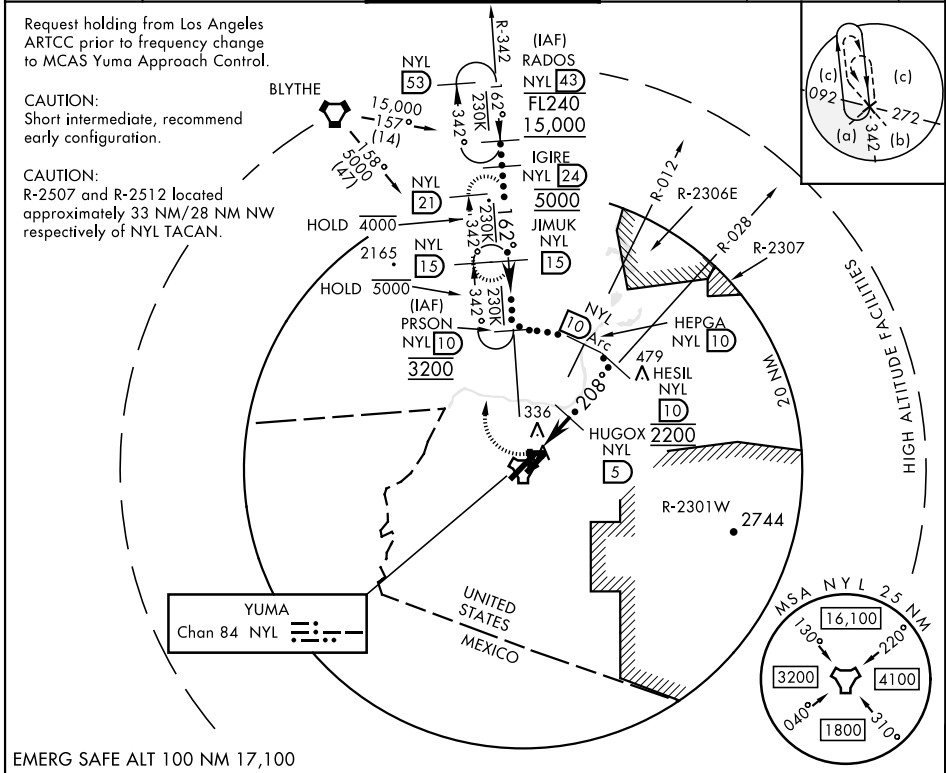
HI-TACAN Z RWY 21R

TACAN NYL Chan 84	APCH CRS 208°	Rwy Idg 13,300 TDZE 193 Arprt Elev 213	AL-511 [UNSN]	YUMA MCAS/YUMA INTL (KNYL)
-----------------------------	-------------------------	---	---------------	----------------------------

* When ALS inop, increase vis to 1 3/8 miles.

 MISSED APPROACH: Climbing right turn to 4000 intercept NYL TACAN R-342 to JIMUK and hold, continue climb-in-hold to 4000.

ATIS★ 118.8 273.5	APP CON 124.7 371.975	TOWER★ 119.3 (CTAF) 0 377.075	GND CON 121.9 314.0	CLNC DEL 118.0 336.4	ASR/ PAR
-----------------------------	---------------------------------	---	-------------------------------	--------------------------------	-------------



EMERG SAFE ALT 100 NM 17,100

 4000 NYL R-342 JIMUK NYL 15	PRSON R-342 10 HEPGA R-012 10 HESIL R-028 10 HUGOX 5 2200 2700 3200 4000 5000 162° 3.12° TCH 50	RADOS R-342 43 FL240 15,000	ELEV 213 TDZE 193 3L-21R 13,300 x 200 3R-21L 9239 x 150 8-26 6146 x 150 17-35 5710 x 150
CATEGORY S-21R*	C 640-7/8	D 447	E (500-7/8)
CIRCLING	800-1 1/2 587 (600-1 1/2)	800-2 587 (600-2)	REIL Rwy 3R-21L, 3L, 35 HIRL Rwys 3R-21L and 3L-21R HIRL Rwys 8-26 and 17-35

HI-TACAN Z RWY 21R



SW-4, 16 MAY 2024 to 13 JUN 2024

SW-4, 16 MAY 2024 to 13 JUN 2024