

YUMA, ARIZONA

RNAV (GPS) RWY 21R

APCH CRS	Rwy Idg	13,300
213°	TDZE	193
	Arprt Elev	213

AL-511 (USN)

YUMA MCAS YUMA INTL (KNYL)

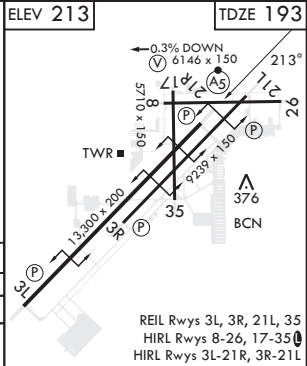
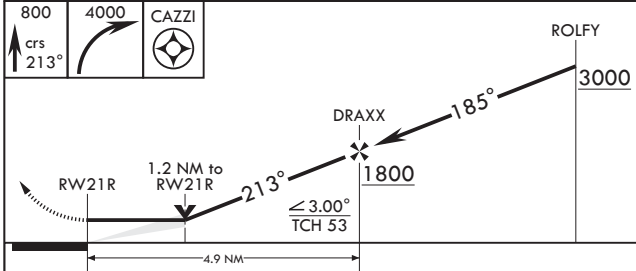
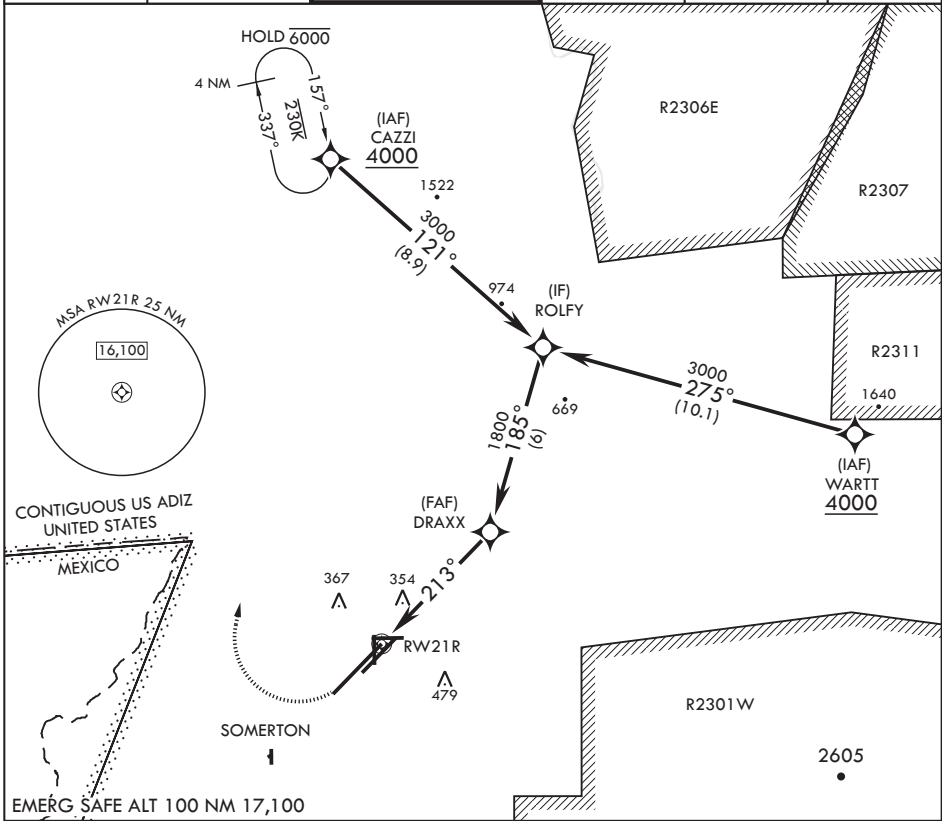
RNP APCH

MALSR

MISSED APPROACH: Climb to 800 then, climbing right turn to 4000 direct CAZZI and hold. Continue climb in hold to 4000.

▼ * When ALS inop, increase CAT AB vis to 1 mile, CAT CD vis to 1 1/4 miles.

ATIS★	APP CON	TOWER★	GND CON	CLNC DEL	ASR/PAR
118.8 273.5	124.7 371.975	119.3 (CTAF) 0 377.075	121.9 314.0	118.0 336.4	



CATEGORY	A	B	C	D
LNAV MDA*	620-½ 427 (500-½)	620-¾ 427 (500-¾)		
CR CIRCLING	680-1 467 (500-1)	700-1 487 (500-1)	800-1½ 587 (600-1½)	800-2 587 (600-2)

YUMA, ARIZONA

32°39'N - 114°36'W

YUMA MCAS YUMA INTL (KNYL)

Amdt 5 22APR21

RNAV (GPS) RWY 21R

SW-4, 16 MAY 2024 to 13 JUN 2024

SW-4, 16 MAY 2024 to 13 JUN 2024

REIL Rwy 3L, 3R, 21L, 35
HIRL Rwy 8-26, 17-35
HIRL Rwy 3L-21R, 3R-21L