

WAAS CH 99616 W13A	APP CRS 128°	Rwy Idg TDZE Apt Elev	7217 592 598
--	------------------------	-----------------------------	---

RNAV (GPS) RWY 13

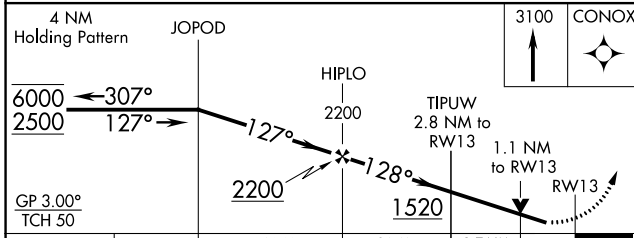
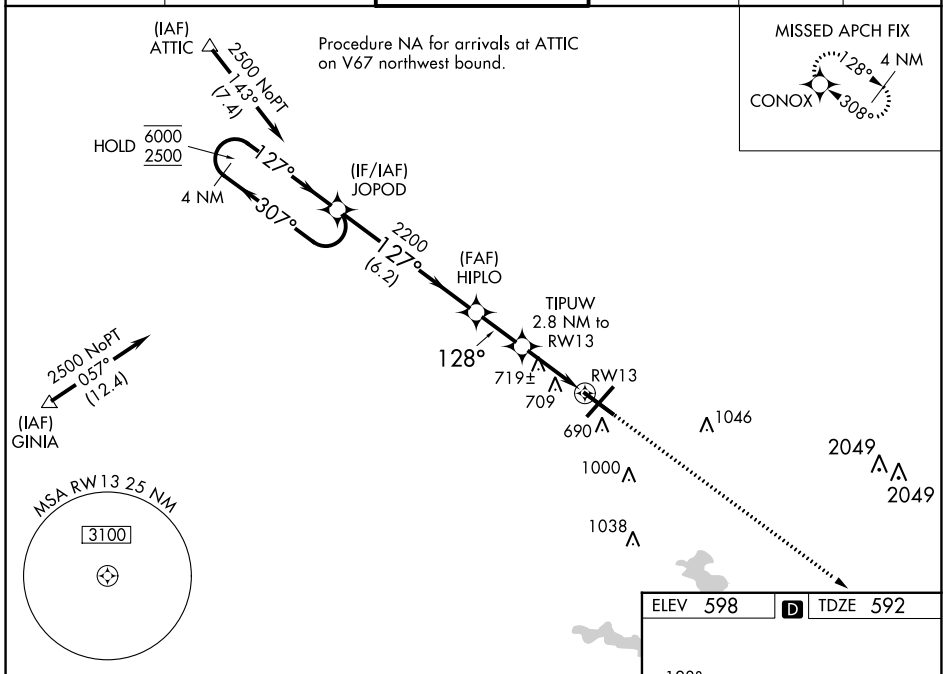
ABRAHAM LINCOLN CAPITAL (SPI)

RNP APCH - GPS.

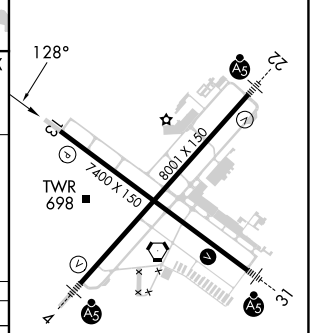
ASR Baro-VNAV and VDP NA when using Lincoln altimeter setting. For uncompensated Baro-VNAV systems, LNAV/VNAV NA below -16°C or above 54°C. When local altimeter setting not received, use Lincoln altimeter setting: increase LPV DA to 932 feet and all visibilities $\frac{1}{8}$ SM; increase LNAV/VNAV DA to 1068 feet and all visibilities $\frac{1}{4}$ SM; increase all MDAs 60 feet and LNAV visibility Cat C/D $\frac{1}{4}$ SM, and Circling visibility Cat C/D $\frac{1}{4}$ SM. Rwy 13 helicopter visibility reduction below $\frac{3}{4}$ SM NA.

MISSED APPROACH:
Climb to 3100 direct CONOX and hold.

ATIS 127.65 270.1	SAINT LOUIS APP CON * 126.15 323.0	SPRINGFIELD TOWER * 121.3 (CTAF) 257.8	GND CON 121.9 348.6	CLNC DEL 121.7	UNICOM 122.95
-----------------------------	--	--	-------------------------------	--------------------------	-------------------------



ELEV 598	D TDZE 592
----------	-------------------



CATEGORY	A	B	C	D
LPV DA		875- $\frac{7}{8}$	283 (300- $\frac{7}{8}$)	
LNAV/VNAV DA		1011-1 $\frac{1}{8}$	419 (500-1 $\frac{1}{8}$)	
LNAV MDA	980-1	388 (400-1)	980-1 $\frac{1}{8}$	388 (400-1 $\frac{1}{8}$)
C CIRCLING	1040-1 442 (500-1)	1100-1 502 (600-1)	1360-2 $\frac{1}{4}$ 762 (800-2 $\frac{1}{4}$)	1380-2 $\frac{1}{2}$ 782 (800-2 $\frac{1}{2}$)

EC-3, 16 MAY 2024 to 13 JUN 2024

EC-3, 16 MAY 2024 to 13 JUN 2024