

WAAS CH 81809 W22A	APP CRS 223°	Rwy Idg TDZE Apt Elev	8001 598 598
--	------------------------	-----------------------------	---

RNAV (GPS) RWY 22

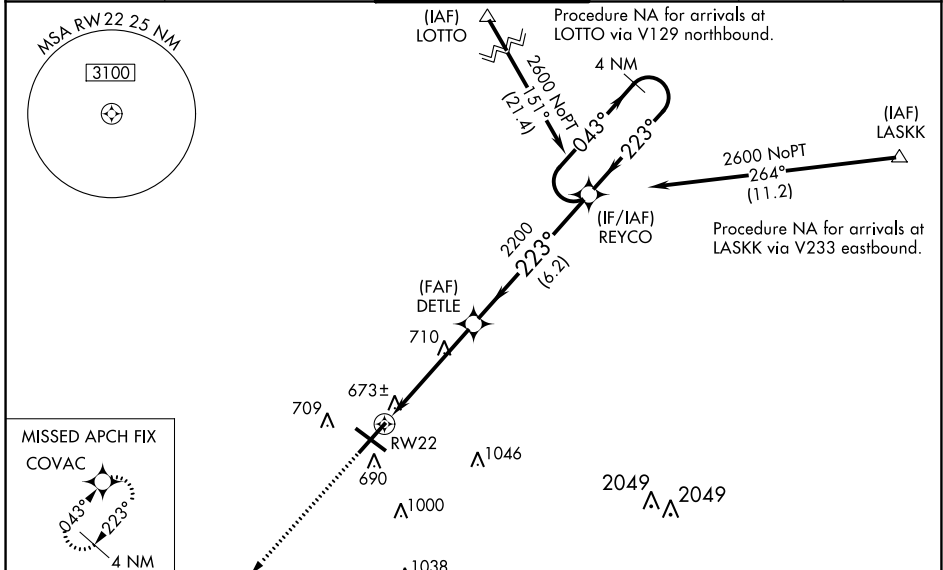
ABRAHAM LINCOLN CAPITAL (SPI)

RNP APCH - GPS.

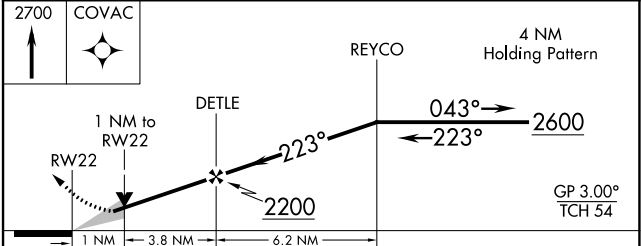
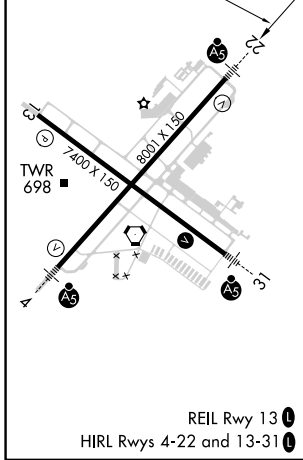
For uncompensated Baro-VNAV systems, LNAV/VNAV NA below -16°C or above 54°C. When local altimeter not received, use Lincoln altimeter setting: increase LPV DA to 942 feet and all visibilities 1/8 SM, LNAV/VNAV DA to 1108 feet and all visibilities 1/8 SM; increase all MDAs 60 feet and visibility LNAV and Circling Cat C/D 1/4 SM. Baro-VNAV and VDP NA when using Lincoln altimeter setting. For inop ALS, increase LPV all Cats visibility to 3/8 SM. For inop ALS when using Lincoln altimeter setting, increase LPV all Cats visibility to 1 SM, increase LNAV/VNAV all Cats visibility to 1 3/8 SM.

MALS R MISSED APPROACH: Climb to 2700 direct COVAC and hold.

ATIS 127.65 270.1	SAINT LOUIS APP CON ★ 126.15 323.0	SPRINGFIELD TOWER ★ 121.3 (CTAF) 0 257.8	GND CON 121.9 348.6	CLNC DEL 121.7	UNICOM 122.95
-----------------------------	--	--	-------------------------------	--------------------------	-------------------------



ELEV 598	D	TDZE 598
----------	----------	----------



CATEGORY	A	B	C	D
LPV DA	884-1/2		286 (300-1/2)	
LNAV/VNAV DA	1050-7/8		452 (500-7/8)	
LNAV MDA	980-1/2 382 (400-1/2)		980-5/8 382 (400-5/8)	
C CIRCLING	1040-1/4 442 (500-1/4)	1100-1/4 502 (600-1/4)	1360-2/4 762 (800-2/4)	1380-2/2 782 (800-2/2)

EC-3, 16 MAY 2024 to 13 JUN 2024

EC-3, 16 MAY 2024 to 13 JUN 2024