

VORTAC GUP <b>115.1</b> Chan <b>98</b>	APP CRS <b>047°</b>	Rwy Idg TDZE Apt Elev	<b>7315</b> <b>6465</b> <b>6472</b>
--	------------------------	-----------------------------	---

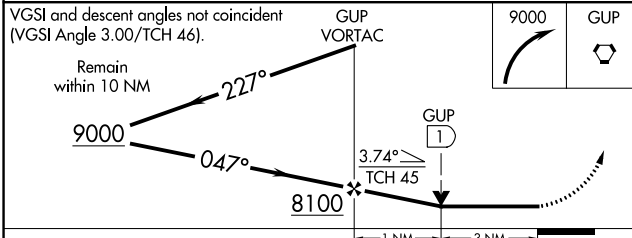
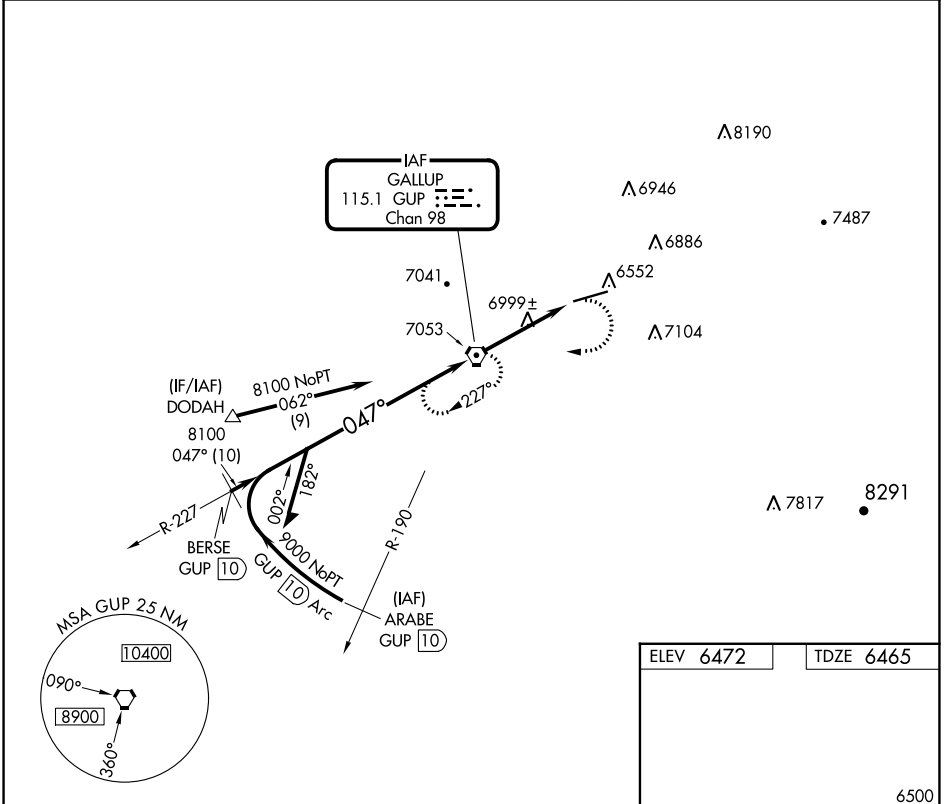
# VOR RWY 6

GALLUP MUNI (GUP)

**⚠** Rwy 6 helicopter visibility reduction below 3/4 SM NA.

**⚠** MISSED APPROACH: Climbing right turn to 9000 direct GUP VORTAC and hold.

ASOS <b>118.375</b>	ALBUQUERQUE CENTER <b>124.325 288.25</b>	UNICOM <b>122.95 (CTAF) 0</b>
------------------------	---	----------------------------------



ELEV 6472	TDZE 6465
-----------	-----------

Diagram illustrating the final approach segment. Key features include:

- Altitudes:** 6500, 6520, 6501, 6524.
- Distance:** 7315 X 100.
- Angle:** 047° 4 NM from FAF.

REIL Rwy 24	MIRL Rwy 6-24				
FAF to MAP 4 NM					
Knots	60	90	120	150	180
Min:Sec	4:00	2:40	2:00	1:36	1:20

CATEGORY	A	B	C	D
S-6	7460-1¼ 995 (1000-1¼)	7460-1½ 995 (1000-1½)	7460-3 995 (1000-3)	NA
CIRCLING	7460-1¼ 988 (1000-1¼)	7460-1½ 988 (1000-1½)	7460-3 988 (1000-3)	7720-3 1248 (1300-3)

SW-1, 16 MAY 2024 to 13 JUN 2024

SW-1, 16 MAY 2024 to 13 JUN 2024