

(WLKKR4.WLKKR) 19339

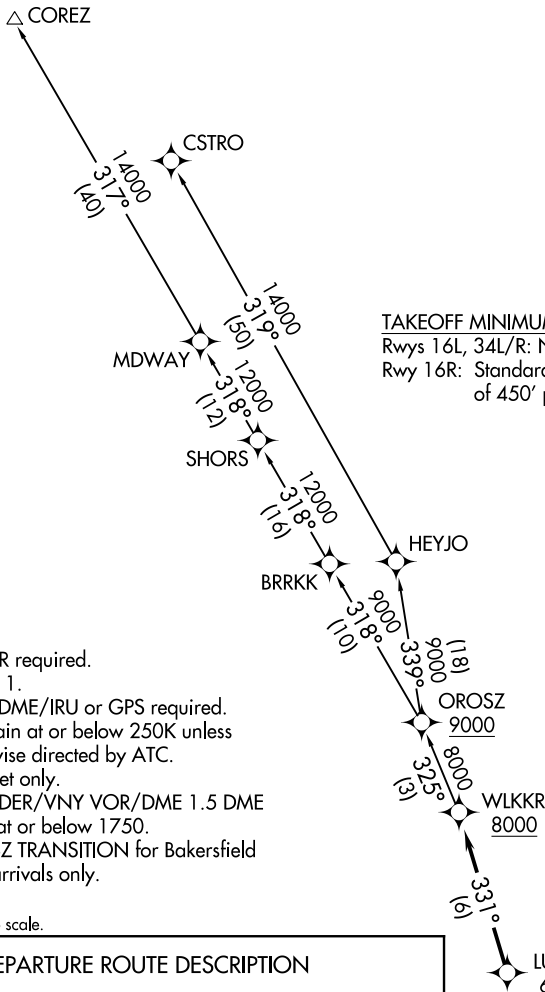
WLKKR FOUR DEPARTURE (RNAV)

AL-552 (FAA)

VAN NUYS (VNY)
VAN NUYS, CALIFORNIA

**TOP ALTITUDE:
FL230**

ATIS
127.55
CLNC DEL
126.6 239.0
CPDLC
GND CON
121.7
SOCAL DEP CON
134.2 338.2



TAKEOFF MINIMUMS
Rwys 16L, 34L/R: NA, ATC.
Rwy 16R: Standard with a minimum climb of 450' per NM to 2600.

- NOTE: RADAR required.
- NOTE: RNAV 1.
- NOTE: DME/DME/IRU or GPS required.
- NOTE: Maintain at or below 250K unless otherwise directed by ATC.
- NOTE: Turbojet only.
- NOTE: Cross DER/VNY VOR/DME 1.5 DME south at or below 1750.
- NOTE: OROSZ TRANSITION for Bakersfield area arrivals only.

NOTE: Chart not to scale.

DEPARTURE ROUTE DESCRIPTION

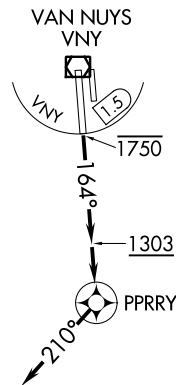
TAKEOFF RUNWAY 16R: Climb on heading 164° to 1303, then climb direct PPRRY, then on heading 210°, or as assigned by ATC, then on vectors to cross LUVVY at or above 6000 then on track 331° to cross WLKKR at or above 8000 thence. . . .

. . . .on (transition) maintain FL230. Expect filed altitude 10 minutes after departure.

COREZ TRANSITION (WLKKR4.COREZ)

CSTRO TRANSITION (WLKKR4.CSTRO)

OROSZ TRANSITION (WLKKR4.ROSZ)



WLKKR FOUR DEPARTURE (RNAV)

(WLKKR4.WLKKR) 05DEC19

VAN NUYS, CALIFORNIA
VAN NUYS (VNY)

SW-3, 16 MAY 2024 to 13 JUN 2024

SW-3, 16 MAY 2024 to 13 JUN 2024