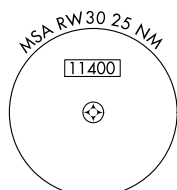
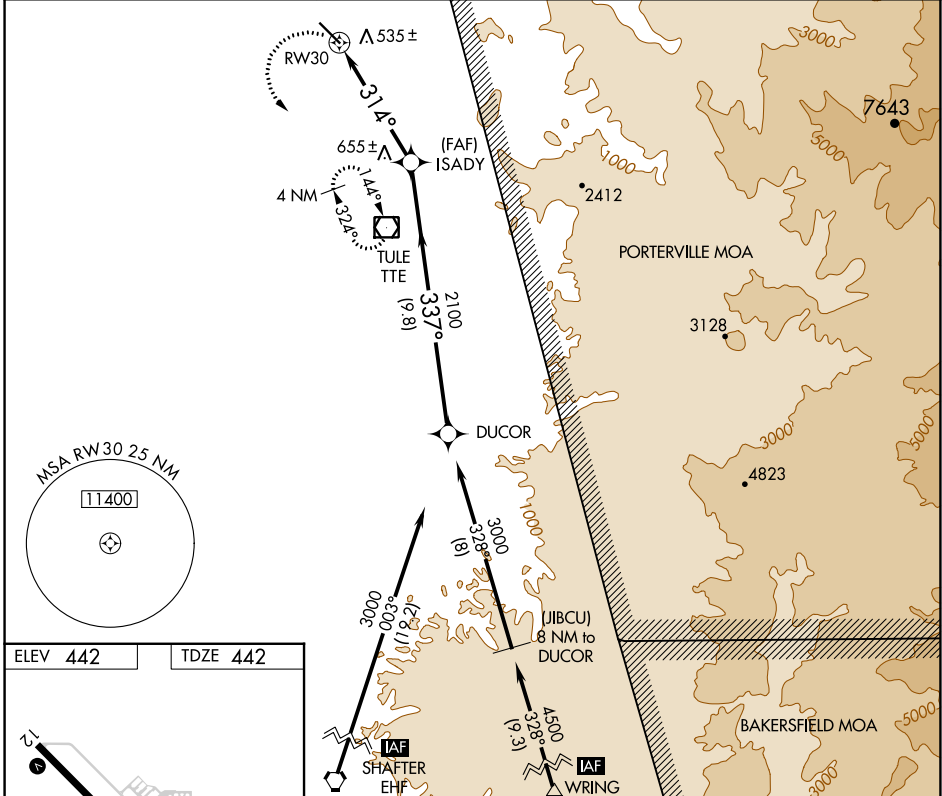


APP CRS **314°**  
 Rwy Idg **5960**  
 TDZE **442**  
 Apt Elev **442**

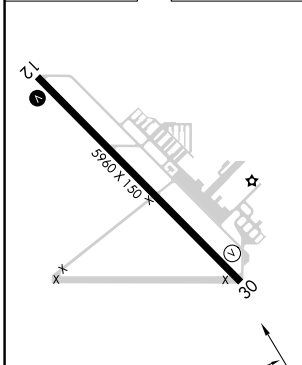
**GPS RWY 30**  
 PORTERVILLE MUNI (P'TV)

**IAF** ARM APPROACH MODE PRIOR TO IAF.  
**NA** Helicopter visibility reduction below ¾ SM NA. MISSED APPROACH: Climbing left turn to 3100 direct TTE VOR/DME and hold.

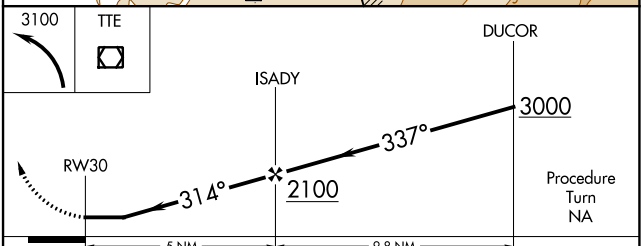
AWOS-3PT **134.625**      BAKERFIELD APP CON\* **120.5**      UNICOM **122.8 (CTAF) 0**



ELEV **442**      TDZE **442**



REIL Rwy 30  
 HIRL Rwy 12-30 0



CATEGORY	A	B	C	D
S-30	900-1	458 (500-1)	900-1¼ 458 (500-1¼)	900-1½ 458 (500-1½)
CIRCLING	900-1	458 (500-1)	940-1½ 498 (500-1½)	1080-2 638 (700-2)

SW-2, 16 MAY 2024 to 13 JUN 2024

SW-2, 16 MAY 2024 to 13 JUN 2024