

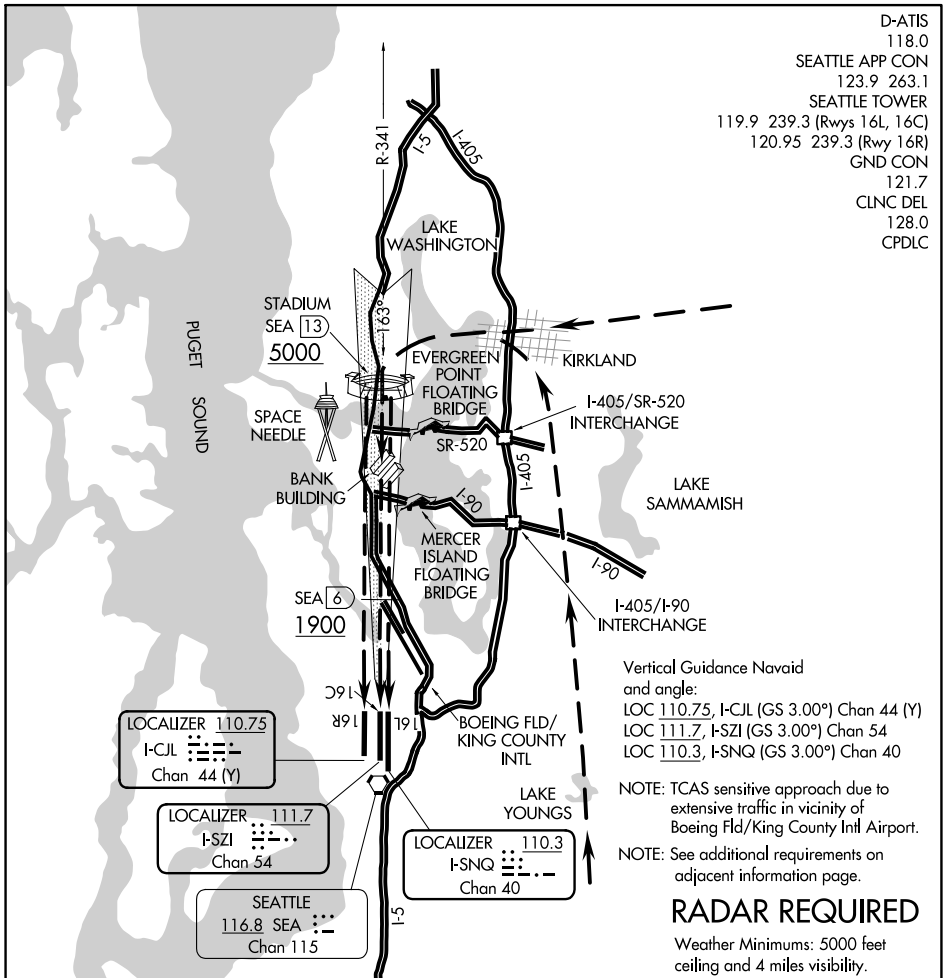
23334

HUSKY VISUAL RWY 16R/C/L

AL-582 (FAA)

SEATTLE-TACOMA INTL (SEA)
SEATTLE, WASHINGTON

- D-ATIS 118.0
- SEATTLE APP CON 123.9 263.1
- SEATTLE TOWER 119.9 239.3 (Rwys 16L, 16C)
- 120.95 239.3 (Rwy 16R)
- GND CON 121.7
- CLNC DEL 128.0
- CPDLC



Vertical Guidance Navaid and angle:
 LOC 110.75, I-CJL (GS 3.00°) Chan 44 (Y)
 LOC 111.7, I-SZI (GS 3.00°) Chan 54
 LOC 110.3, I-SNQ (GS 3.00°) Chan 40

NOTE: TCAS sensitive approach due to extensive traffic in vicinity of Boeing Fld/King County Intl Airport.
 NOTE: See additional requirements on adjacent information page.

RADAR REQUIRED

Weather Minimums: 5000 feet ceiling and 4 miles visibility.

0	5	10 NM	15	20	25	30
---	---	-------	----	----	----	----

HUSKY VISUAL APPROACH RWY 16R/C/L

When the ceiling is at least 5000' and visibility is at least 4 miles, aircraft may be vectored over Kirkland or Lake Youngs for a Husky Visual Runway 16R/C/L Approach. When cleared for a Husky Visual Approach; proceed inbound visually over Stadium (via route depicted); intercept the Runway 16R/C/L localizer/SEA R-341 at 13 DME and complete a straight in visual approach to the airport.

HUSKY VISUAL RWY 16R/C/L

Amdt 5 10MAR11

47°27'N-122°19'W

SEATTLE, WASHINGTON
SEATTLE-TACOMA INTL (SEA)

NW-1, 16 MAY 2024 to 13 JUN 2024

NW-1, 16 MAY 2024 to 13 JUN 2024