

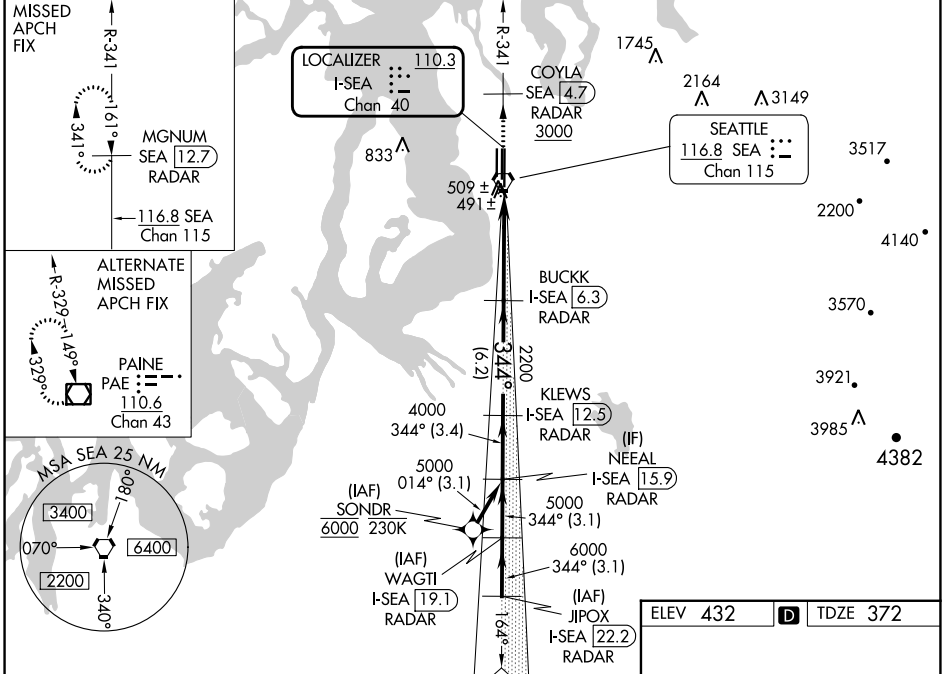
LOC/DME I-SEA 110.3 Chan 40	APP CRS 344°	Rwy Idg TDZE Apt Elev	11901 372 432
---	------------------------	-----------------------------	--

ILS RWY 34R (SA CAT I & II)

SEATTLE-TACOMA INTL (SEA)

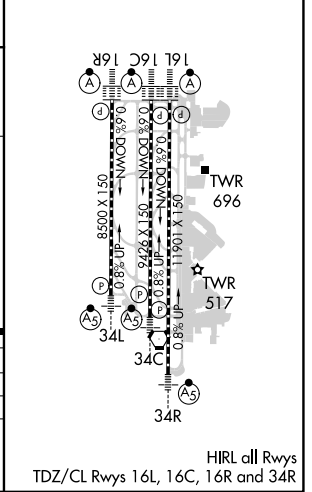
From SONDR: RNAV 1-GPS required. DME or RADAR required.		MALS R	MISSED APPROACH: Climb on heading 343° and outbound on SEA VORTAC R-341 to cross COYLA/SEA 4.7 DME/RADAR at or above 3000 then climb to 5000 on SEA VORTAC R-341 to MGNUM/SEA 12.7 DME/RADAR and hold, continue climb-in-hold to 5000.		
<p>Simultaneous approach authorized with Rwy 34L. SA CAT I: Requires specific OPSPEC, MSPEC, or LOA approval and use of HUD to DH. SA CAT II: Reduced lighting: Requires specific OPSPEC, MSPEC, or LOA approval and use of autoland or HUD to touchdown.</p>					

D-ATIS 118.0	SEATTLE APP CON 133.65 273.45	SEATTLE TOWER 119.9 239.3 (Rwys 16L, 16C, 34C, 34R) 120.95 239.3 (Rwys 16R, 34L)	GND CON 121.7	CLNC DEL 128.0	CPDLC
------------------------	---	--	-------------------------	--------------------------	-------



VGSI and ILS glidepath not coincident (VGSI Angle 2.75/TCH 81).					
JIPOX I-SEA 22.2 RADAR	WAGTI I-SEA 19.1 RADAR	NEAL I-SEA 15.9 RADAR	KLEWS I-SEA 12.5 RADAR	BUCKK I-SEA 6.3 RADAR	COYLA SEA 4.7 3000
<p>7000 ← 344° → 6000 ← 5000 ← 4000 ← 2200</p> <p>GS 2.75° TCH 60</p>				<p>↑ hdg 343°</p> <p>SEA R-341</p> <p>5000 SEA R-341</p> <p>MGNUM SEA 12.7</p> <p>Use I-SEA DME when on localizer course.</p>	
3.1 NM		3.1 NM		3.4 NM	
6.2 NM		6.1 NM		1.135°	

ELEV 432	D	TDZE 372
----------	----------	----------



CATEGORY	A	B	C	D
S-ILS 34R	SA CAT I	RA 250/14	150	DA 522
S-ILS 34R	SA CAT II	RA 200/12	100	DA 472

SA CATEGORY I & II ILS - SPECIAL AIRCREW & AIRCRAFT CERTIFICATION REQUIRED

NW-1, 16 MAY 2024 to 13 JUN 2024

NW-1, 16 MAY 2024 to 13 JUN 2024