

LOC/DME I-SEA 110.3 Chan 40	APP CRS 344°	Rwy Idg 11901 9426 TDZE 372 387 Apt Elev 432 432	34R 34C
-------------------------------------------------	------------------------	-----------------------------------------------------------------------------	---------

ILS or LOC RWY 34R

SEATTLE-TACOMA INTL (SEA)

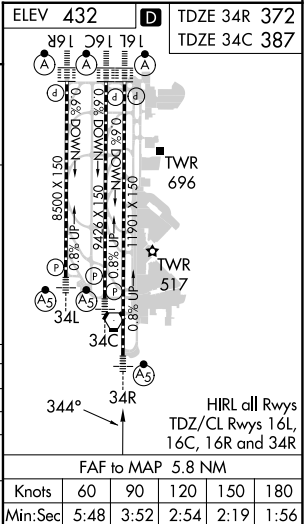
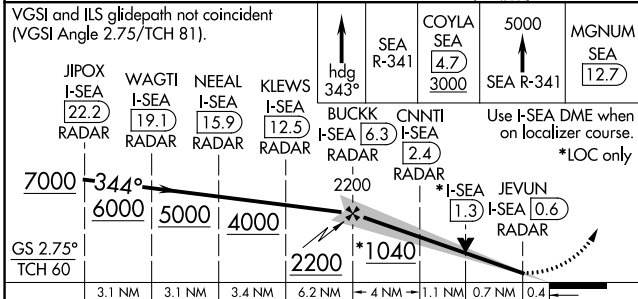
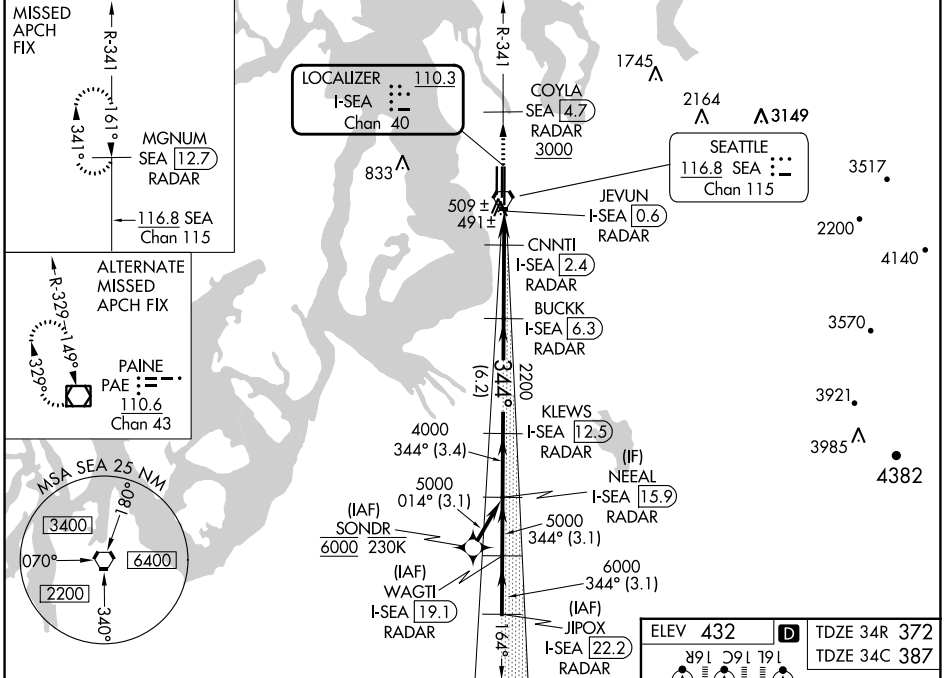
From SONDR: RNAV 1-GPS required. DME or RADAR required.

MALS Rwy 34R/C

MISSED APPROACH: Climb on heading 343° and outbound on SEA VORTAC R-341 to cross COYLA/SEA 4.7 DME/RADAR at or above 3000 then climb to 5000 on SEA VORTAC R-341 to MGNUM/SEA 12.7 DME/RADAR and hold, continue climb-in-hold to 5000.

Inop table does not apply to Sidestep 34C Cats A/B. Simultaneous approach authorized with Rwy 34L.

D-ATIS 118.0	SEATTLE APP CON 133.65 273.45	SEATTLE TOWER 119.9 239.3 (Rwys 16L, 16C, 34C, 34R) 120.95 239.3 (Rwys 16R, 34L)	GND CON 121.7	CLNC DEL 128.0	CPDLC
------------------------	-----------------------------------------	------------------------------------------------------------------------------------------------------	-------------------------	--------------------------	-------



VGSI and ILS glidepath not coincident (VGSI Angle 2.75/TCH 81).	Use I-SEA DME when on localizer course. *LOC only			
JIPOX I-SEA 22.2 RADAR	WAGTI I-SEA 19.1 RADAR	NEAL I-SEA 15.9 RADAR	KLEWS I-SEA 12.5 RADAR	BUCKK I-SEA 6.3 RADAR
CNNTI I-SEA 2.4 RADAR	JEVUN I-SEA 0.6 RADAR			
GS 2.75% TCH 60	3.1 NM	3.1 NM	3.4 NM	6.2 NM
	A	B	C	D
CATEGORY	S-ILS 34R 572/18 200 (200-½)			
	S-LOC 34R 740/24 368 (400-½) 740/35 368 (400-¾)			
	SIDESTEP 34C 760/55 373 (400-1) 760-1½ 373 (400-1½)			
CRCLING	1000-1 568 (600-1)		1000-1½ 568 (600-1½) 1000-2 568 (600-2)	

NW-1, 16 MAY 2024 to 13 JUN 2024

NW-1, 16 MAY 2024 to 13 JUN 2024