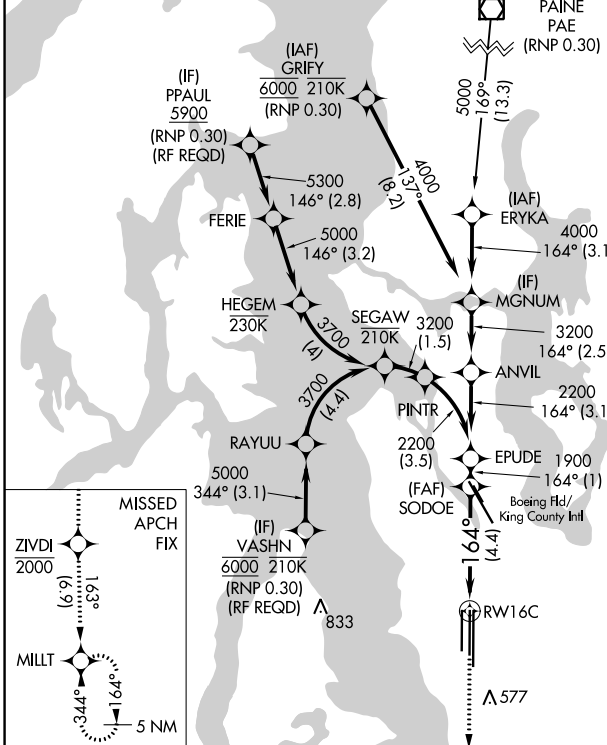


APP CRS	Rwy Idg	9426
164°	TDZE	430
	Apt Elev	433

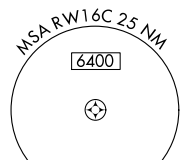
RNAV (RNP) Z RWY 16C

SEATTLE-TACOMA INTL (SEA)

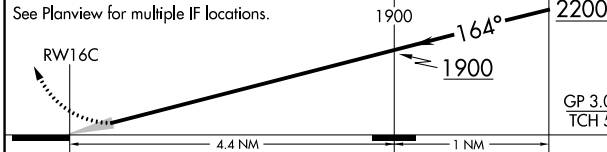
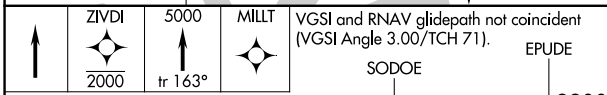
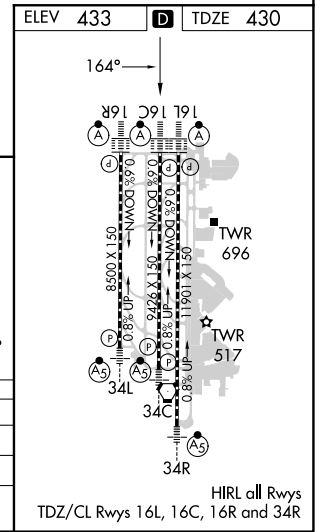
D-ATIS 118.0	SEATTLE APP CON 133.65 273.45	SEATTLE TOWER 119.9 239.3 (Rwys 16L, 16C, 34C, 34R) 120.95 239.3 (Rwys 16R, 34L)		GND CON 121.7	CLNC DEL 128.0	CPDLC
		<p>For uncompensated Baro-VNAV systems, procedure NA below -6°C (22°F) or above 54°C (130°F). GPS required. See additional requirements on adjacent information page. For inop ALS, increase RNP 0.12 all Cats visibility to RVR 5200, and increase RNP 0.30 all Cats visibility to 1 3/8 SM.</p>				



MISSED APPROACH: Climb direct ZIVDI to cross ZIVDI at or below 2000, then climb to 5000 on track 163° to MILLT and hold, continue climb-in-hold to 5000.



RADAR REQUIRED



CATEGORY	A	B	C	D
RNP 0.12 DA		758/29	328 (400-%)	
RNP 0.30 DA		834/43	404 (500-%)	

AUTHORIZATION REQUIRED

NW-1, 16 MAY 2024 to 13 JUN 2024

NW-1, 16 MAY 2024 to 13 JUN 2024