

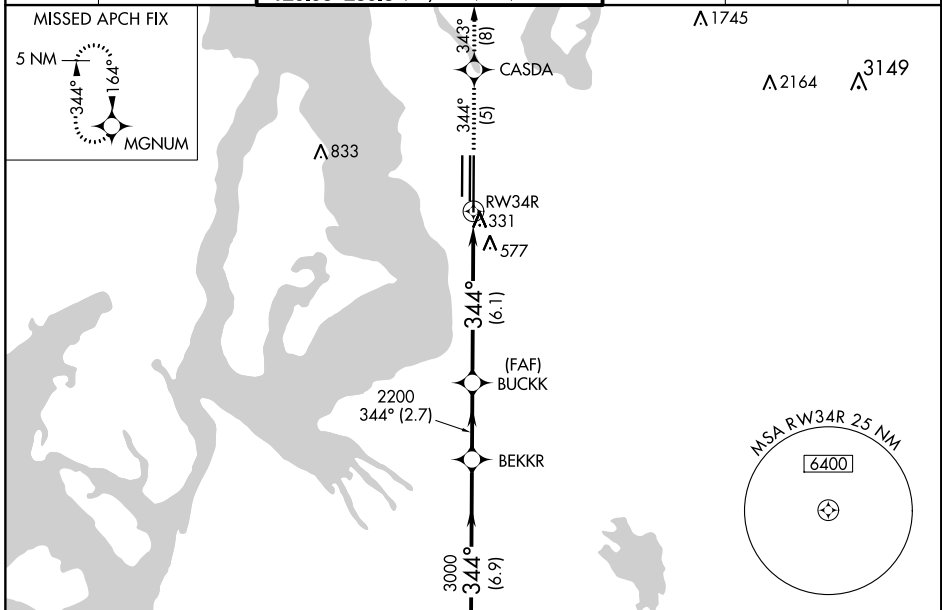
APP CRS	Rwy Idg	11901
344°	TDZE	372
	Apt Elev	432

RNAV (RNP) Z RWY 34R

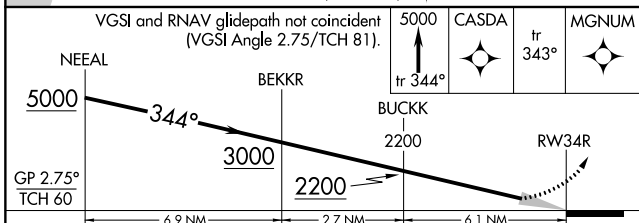
SEATTLE-TACOMA INTL (SEA)

RNP AR APCH.		MALSR	MISSED APPROACH: Climb to 5000 on track 344° to CASDA and on track 343° to MGNUM and hold, continue climb-in-hold to 5000.	
⚠ Simultaneous approach authorized. For uncompensated Baro-VNAV systems, procedure NA below -6°C or above 54°C. Use of FD or AP required during simultaneous operations. For inop ALS, increase RNP 0.28 all Cats visibility to 1½ SM. Inop table does not apply to RNP 0.30.				

D-ATIS	SEATTLE APP CON	SEATTLE TOWER	GND CON	CLNC DEL	CPDLC
118.0	133.65 273.45	119.9 239.3 (Rwys 16L, 16C, 34C, 34R) 120.95 239.3 (Rwys 16R, 34L)	121.7	128.0	



VGSi and RNAV glidepath not coincident (VGSi Angle 2.75/TCH 81).			
NEAL	BEKRR	BUCKK	tr 343°
5000	3000	2200	MGNUM



CATEGORY	A	B	C	D
RNP 0.28 DA		867/50	495 (500-1)	
RNP 0.30 DA		880-1½	508 (500-1½)	

AUTHORIZATION REQUIRED

