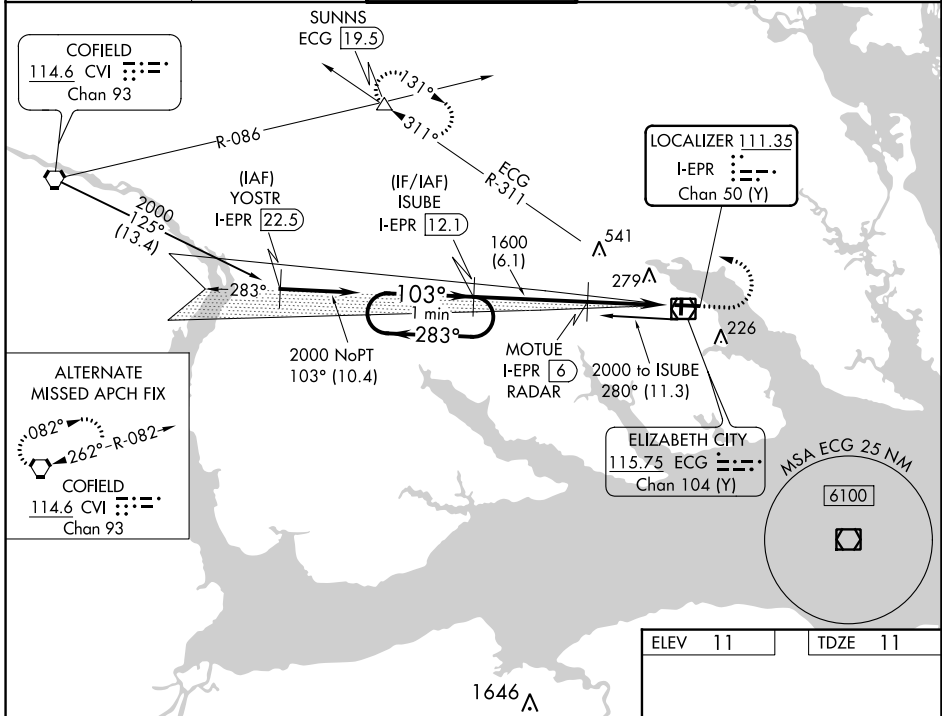


LOC/DME I-EPR 111.35 Chan 50 (Y)	APP CRS 103°	Rwy Idg 7219 TDZE 11 Apt Elev 11
--	------------------------	---

ILS or LOC RWY 10

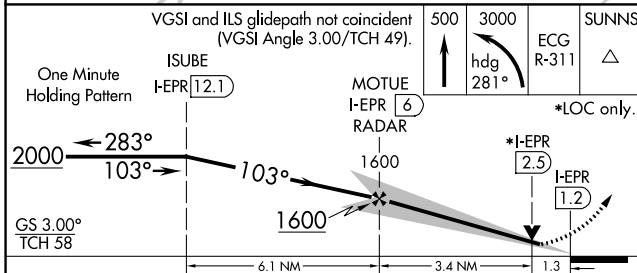
ELIZABETH CITY CG AIR STATION/RGNL (ECG)

DME required.		SALS	MISSED APPROACH: Climb to 500 then climbing left turn to 3000 on heading 281° and ECG VOR/DME R-311 to SUNNS INT/ECG 19.5 DME and hold.	
ASOS 124.375	NORFOLK APP CON 119.55 269.425	ELIZABETH CITY TOWER ★ 120.5 (CTAF) 355.6	GND CON 121.9	UNICOM 122.95



ALTERNATE MISSED APCH FIX

COFIELD
114.6 CVI Chan 93



ELEV 11	TDZE 11
MRL Rwy 1-19 HIRL Rwy 10-28 REIL Rwys 10 and 28	
FAF to MAP 4.7 NM	
Knots	60 90 120 150 180
Min:Sec	4:42 3:08 2:21 1:53 1:34

CATEGORY	A	B	C	D
S-ILS 10	261- ³ / ₄		250 (300- ³ / ₄)	
S-LOC 10	460-1 449 (500-1)		460-1 ³ / ₈ 449 (500-1 ³ / ₈)	
CIRCLING	480-1 469 (500-1)		640-1 ³ / ₈ 629 (700-1 ³ / ₈) 640-2 629 (700-2)	

SE-2, 16 MAY 2024 to 13 JUN 2024

SE-2, 16 MAY 2024 to 13 JUN 2024