

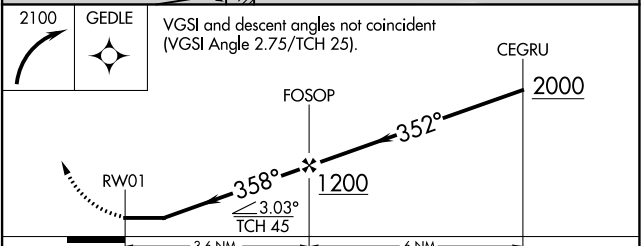
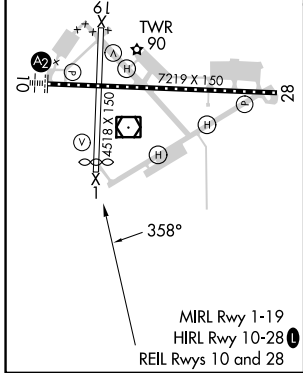
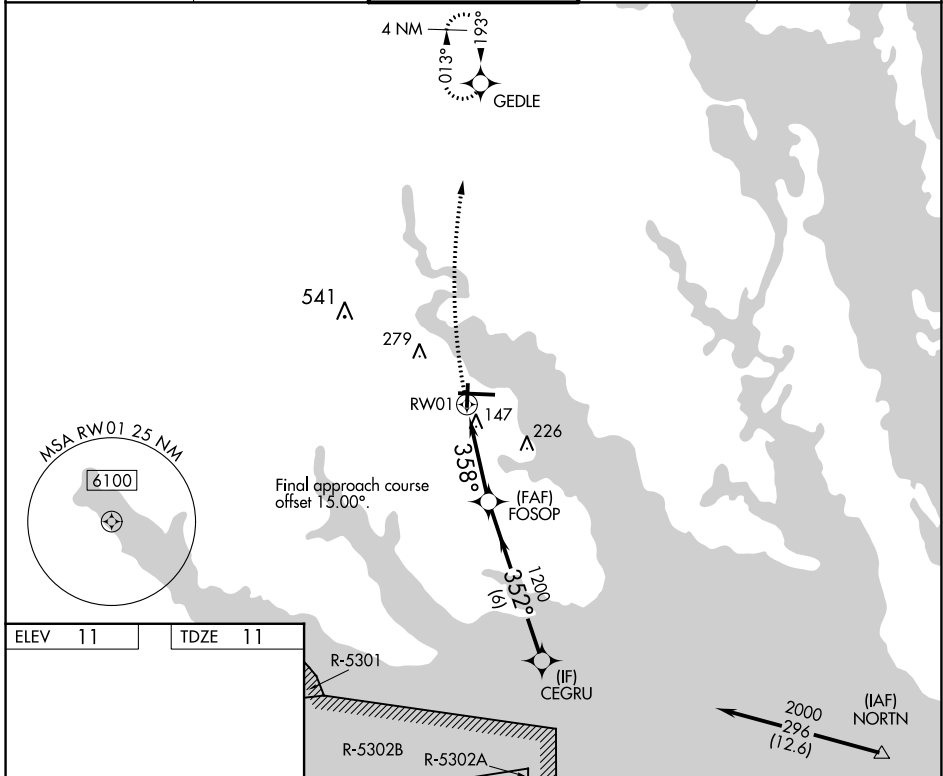
APP CRS	Rwy Idg	<b>4219</b>
<b>358°</b>	TDZE	<b>11</b>
	Apt Elev	<b>11</b>

# RNAV (GPS) RWY 1

ELIZABETH CITY CG AIR STATION/RGNL (ECG)

RNP APCH.	<p><b>▽</b> Rwy 1 helicopter visibility reduction below <math>\frac{3}{4}</math> SM NA. ATC clearance required to penetrate R-5302B. Procedure NA when tethered balloon located approximately 2 miles southeast airport is flying.</p>	MISSED APPROACH: Climbing right turn to 2100 direct GEDLE and hold.
-----------	--	---

ASOS <b>124.375</b>	NORFOLK APP CON <b>119.55 269.425</b>	ELIZABETH CITY TOWER ★ <b>120.5 (CTAF) 355.6</b>	GND CON <b>121.9</b>	UNICOM <b>122.95</b>
------------------------	--	---	-------------------------	-------------------------



CATEGORY	A	B	C	D
INAV MDA	460-1	449 (500-1)	460- $\frac{13}{8}$	449 (500- $\frac{13}{8}$ )
<b>C</b> CIRCLING	480-1	469 (500-1)	640- $\frac{13}{4}$ 629 (700- $\frac{13}{4}$ )	640-2 629 (700-2)

SE-2, 16 MAY 2024 to 13 JUN 2024

SE-2, 16 MAY 2024 to 13 JUN 2024