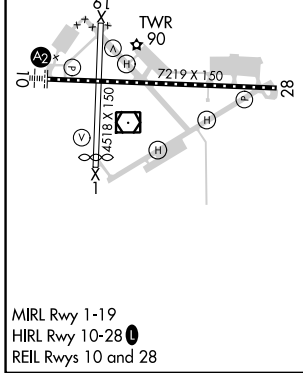
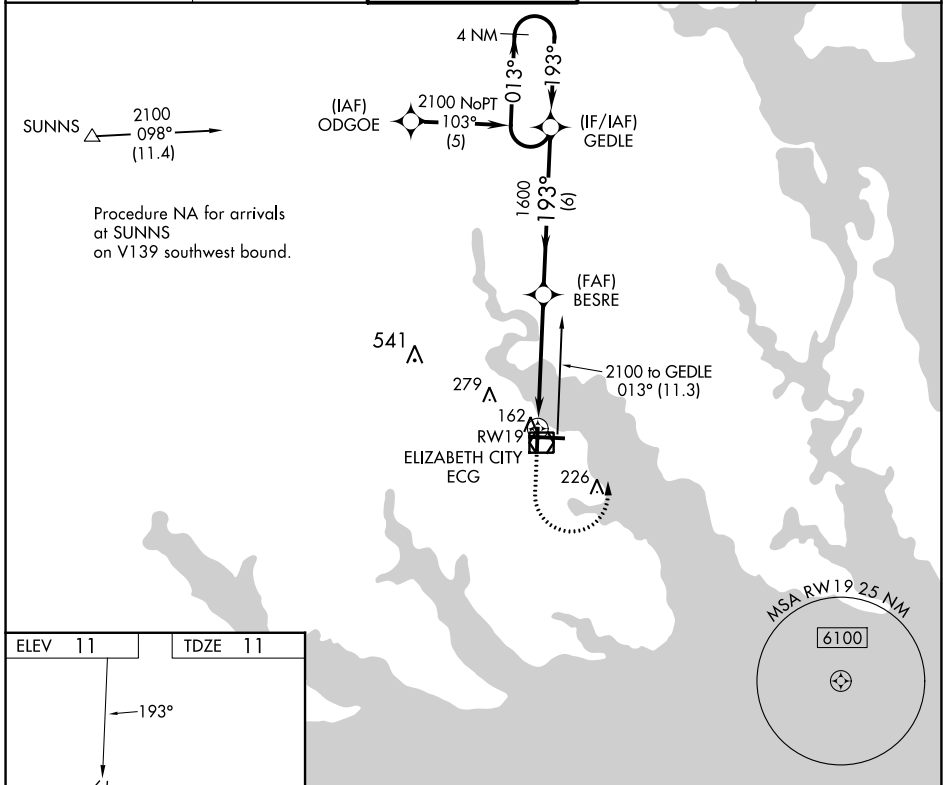


APP CRS	Rwy Idg	<b>4518</b>
<b>193°</b>	TDZE	<b>11</b>
	Apt Elev	<b>11</b>

# RNAV (GPS) RWY 19

ELIZABETH CITY CG AIR STATION/RGNL (ECG)

RNP APCH.		MISSED APPROACH: Climb to 900 then climbing left turn to 2100 direct GEDLE and hold.		
ASOS	NORFOLK APP CON	ELIZABETH CITY TOWER★	GND CON	UNICOM
<b>124.375</b>	<b>119.55 269.425</b>	<b>120.5 (CTAF) 355.6</b>	<b>121.9</b>	<b>122.95</b>



900	2100	GEDLE	VGS1 and descent angles not coincident (VGS1 Angle 2.75/TCH 30).		4 NM Holding Pattern
1.5 NM to RW19		3.3 NM		6 NM	
1.5	3.3	6			
CATEGORY	A	B	C	D	
LNAV MDA	480-1	469 (500-1)	480-1 <sup>3</sup> / <sub>8</sub>	469 (500-1 <sup>3</sup> / <sub>8</sub> )	
<b>C</b> CIRCLING	480-1	469 (500-1)	640-1 <sup>3</sup> / <sub>4</sub>	640-2 629 (700-1 <sup>3</sup> / <sub>4</sub> ) 629 (700-2)	

SE-2, 16 MAY 2024 to 13 JUN 2024

SE-2, 16 MAY 2024 to 13 JUN 2024