

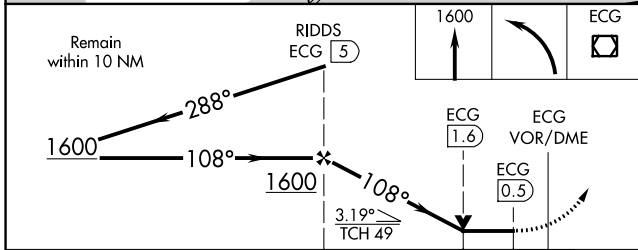
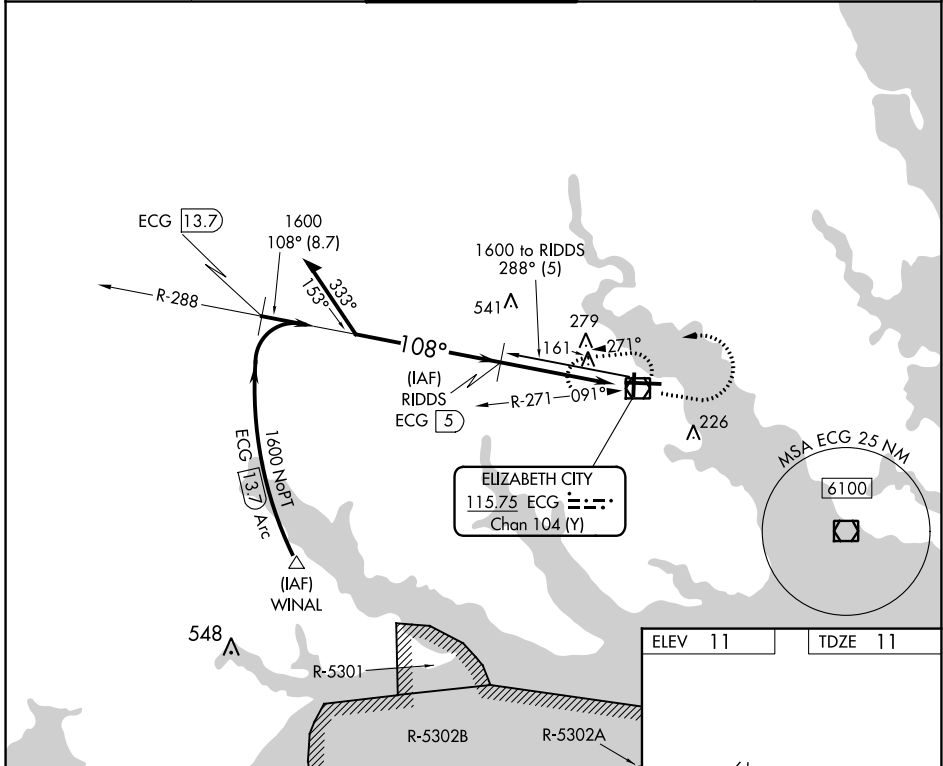
VOR/DME ECG	APP CRS	Rwy Idg	7219
115.75	108°	TDZE	11
Chan 104 (Y)		Apt Elev	11

VOR/DME RWY 10

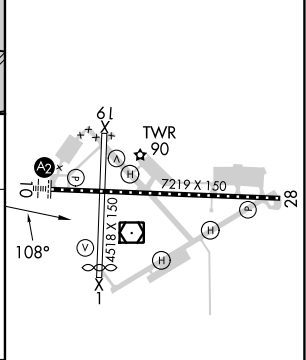
ELIZABETH CITY CG AIR STATION/RGNL (ECG)

<p>⚠ Procedure NA when tethered balloon located approximately 2 miles southeast of airport is flying. When local altimeter setting not received, use Currituck altimeter setting and increase all MDAs 40 feet and increase S-10 visibility Cats C/D $\frac{1}{8}$ SM.</p>	<p>SALS</p> <p>A2 </p>	<p>MISSED APPROACH: Climb to 1600 then left turn direct ECG VOR/DME and hold.</p>
--	-------------------------------	---

ASOS 124.375	NORFOLK APP CON 119.55 269,425	ELIZABETH CITY TOWER * 120.5 (CTAF) 355.6	GND CON 121.9	UNICOM 122.95
------------------------	--	---	-------------------------	-------------------------



ELEV 11	TDZE 11
----------------	----------------



CATEGORY	A	B	C	D
S-10	540-1	529 (600-1)	540-1 $\frac{1}{4}$	529 (600-1 $\frac{1}{4}$)
C CIRCLING	540-1	529 (600-1)	640-1 $\frac{3}{4}$	640-2
			629 (700-1 $\frac{3}{4}$)	629 (700-2)

MIRL Rwy 1-19
HIRL Rwy 10-28
REL Rwys 10 and 28

SE-2, 16 MAY 2024 to 13 JUN 2024

SE-2, 16 MAY 2024 to 13 JUN 2024