

| | | |
|---|------------------------|---|
| VOR/DME ECG 115.75 Chan 104 (Y) | APP CRS 184° | Rwy Idg 4518 TDZE 11 Apt Elev 11 |
|---|------------------------|---|

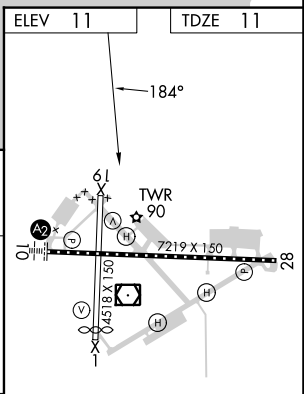
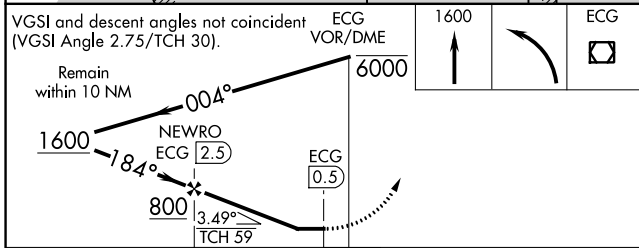
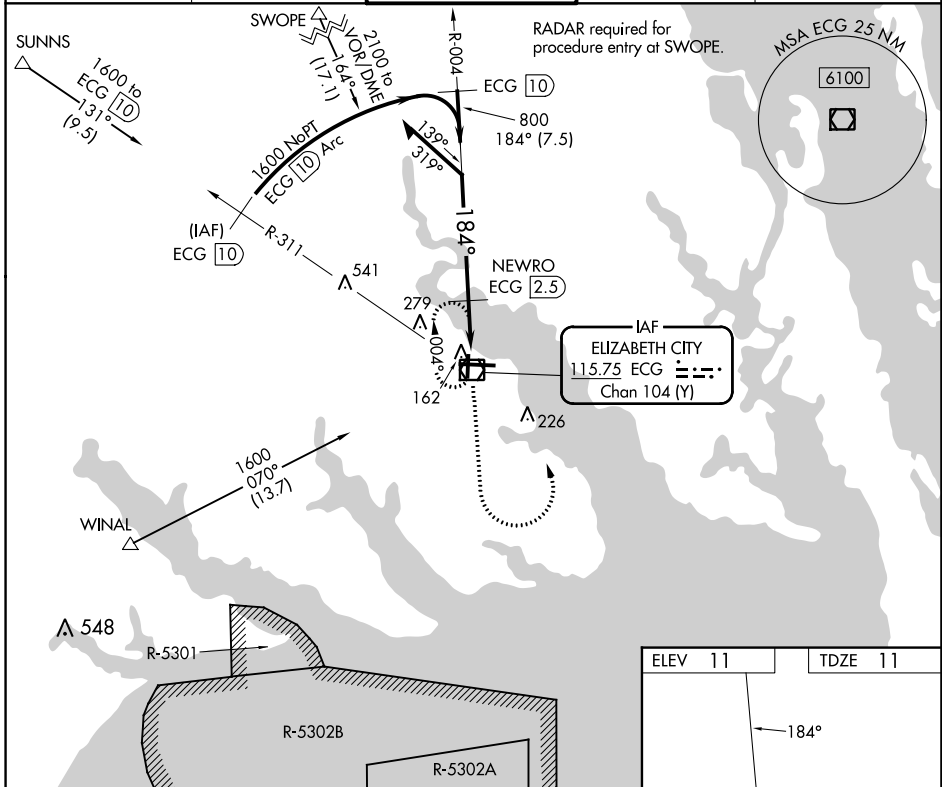
VOR/DME RWY 19

ELIZABETH CITY CG AIR STATION/RGNL (ECG)

Procedure NA when tethered balloon located approximately 2 miles southeast of airport is flying. When local altimeter setting not received, use Currituck altimeter setting and increase all MDAs 40 feet.

MISSED APPROACH: Climb to 1600 then left turn direct ECG VOR/DME and hold.

| | | | | |
|------------------------|--|--|-------------------------|-------------------------|
| ASOS 124.375 | NORFOLK APP CON 119.55 269.425 | ELIZABETH CITY TOWER★ 120.5 (CTAF) 355.6 | GND CON 121.9 | UNICOM 122.95 |
|------------------------|--|--|-------------------------|-------------------------|



| CATEGORY | A | B | C | D |
|-------------------|-------------------|---|---|---|
| S-19 | 480-1 469 (500-1) | | 480-1 ³ / ₈ 469 (500-1 ³ / ₈) | 480-1 ¹ / ₂ 469 (500-1 ¹ / ₂) |
| C CIRCLING | 480-1 469 (500-1) | | 640-1 ³ / ₄ 629 (700-1 ³ / ₄) | 640-2 629 (700-2) |

MIRL Rwy 1-19
HIRL Rwy 10-28
REIL Rws 10 and 28

SE-2, 16 MAY 2024 to 13 JUN 2024

SE-2, 16 MAY 2024 to 13 JUN 2024