

# GRAYM SIX ARRIVAL

AL-626 (FAA)

BEDFORD, MASSACHUSETTS

BOSTON APP CON  
124.4 279.6  
BRADLEY APP CON  
119.0 327.1  
BED ATIS  
124.6  
BVY ATIS  
119.2  
LWM ATIS  
126.75

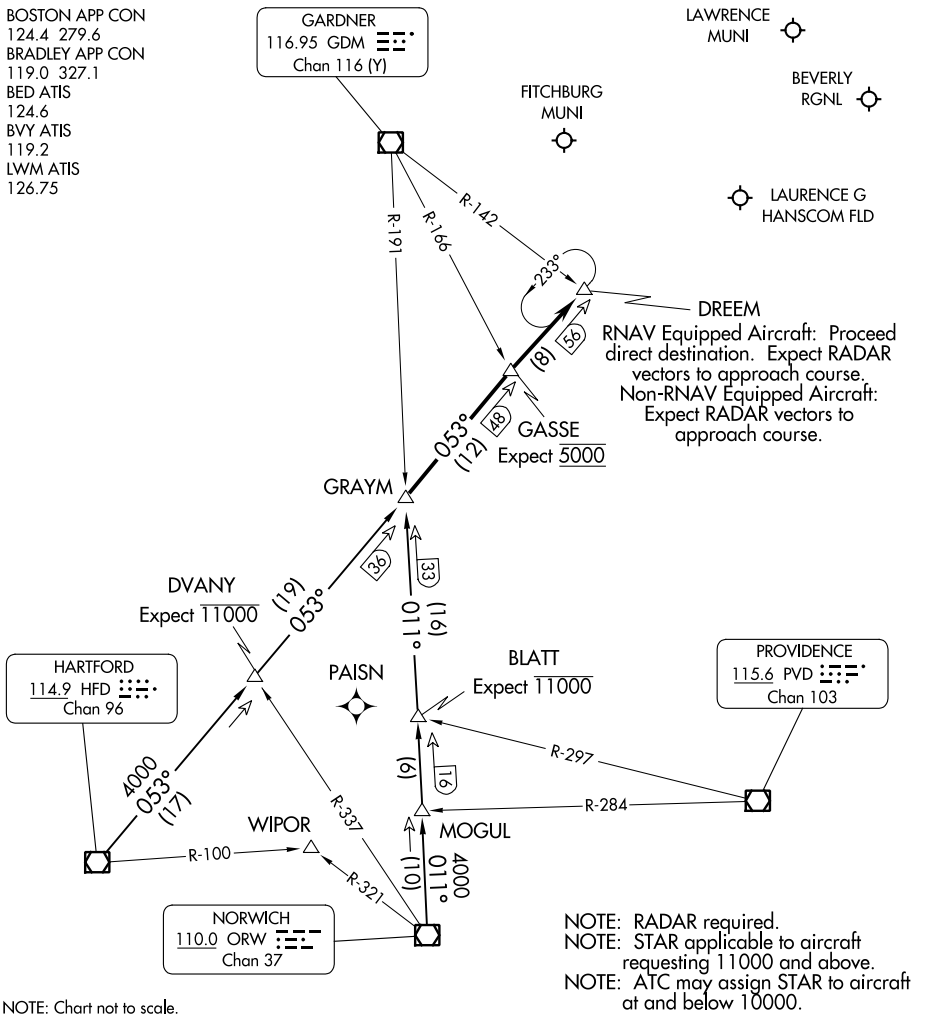
GARDNER  
116.95 GDM   
Chan 116 (Y)

LAWRENCE MUNI

FITCHBURG MUNI

BEVERLY RGNL

LAURENCE G HANSCOM FLD



NE-1, 16 MAY 2024 to 13 JUN 2024

NE-1, 16 MAY 2024 to 13 JUN 2024

NOTE: Chart not to scale.

### ARRIVAL ROUTE DESCRIPTION

HARTFORD TRANSITION (HFD.GRAYM6): From over HFD VOR/DME on HFD R-053 to GRAYM. Thence. . .

NORWICH TRANSITION (ORW.GRAYM6): From over ORW VOR/DME on ORW R-011 to GRAYM. Thence. . .

. . . . From over GRAYM on HFD R-053 to GASSE, then to DREEM, at DREEM:

RNAV EQUIPPED AIRCRAFT: Proceed direct destination expect radar vectors to approach course.

NON-RNAV EQUIPPED AIRCRAFT: Expect radar vectors to approach course.

# GRAYM SIX ARRIVAL

BEDFORD, MASSACHUSETTS