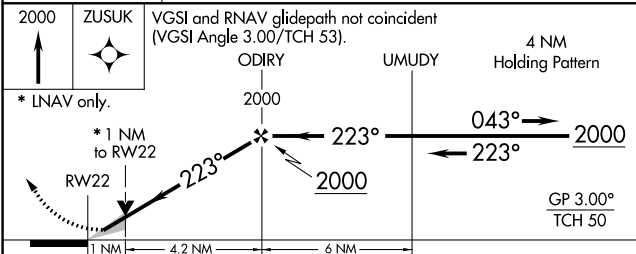
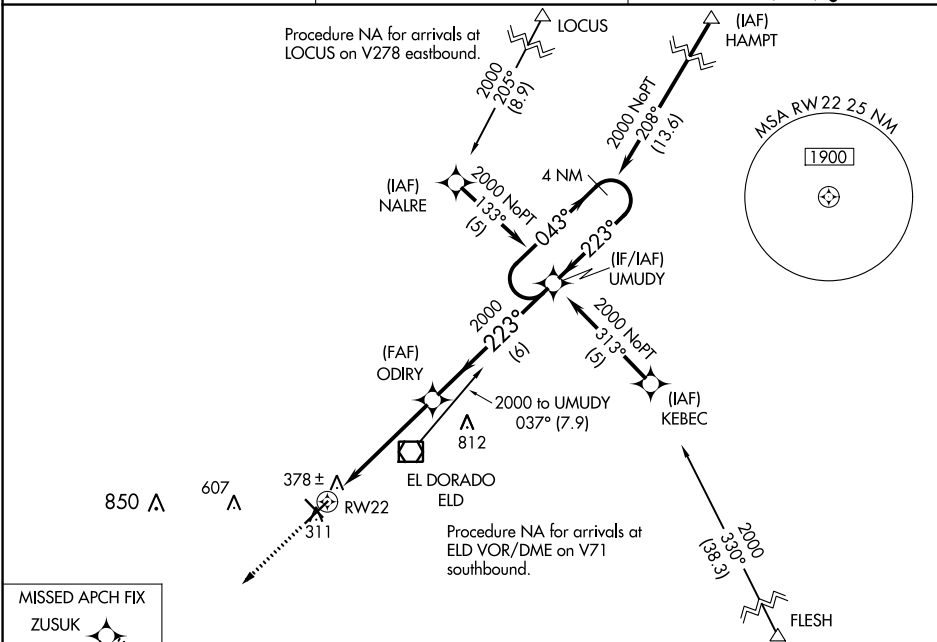


WAAS CH 77521 W22A	APP CRS 223°	Rwy Idg 6601 TDZE 259 Apt Elev 277
--	------------------------	---

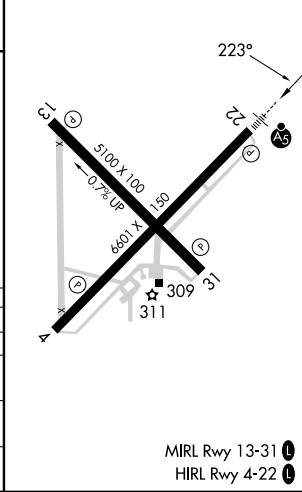
RNAV (GPS) RWY 22

SOUTH ARKANSAS RGNL AT GOODWIN FLD (ELD)

RNP APCH. ▽ For uncompensated Baro-VNAV systems, LNAV/VNAV NA below -15°C or above 54°C. For inop ALS, increase LPV all Cats visibility to 1½ SM, increase LNAV/VNAV all Cats visibility to 1¼ SM. Circling Rwy 4, 13, 31, NA at night.	MALSRL 	MISSED APPROACH: Climb to 2000 direct ZUSUK and hold.
ASOS 118.325	FORT WORTH CENTER 128.2 269.1	UNICOM 123.0 (CTAF) 0



ELEV 277	TDZE 259
----------	----------



CATEGORY	A	B	C	D
LPV DA	602-5/8 343 (400-5/8)			
LNAV/VNAV DA	650-7/8 391 (400-7/8)			
LNAV MDA	640-1/2 381 (400-1/2)	640-5/8 381 (400-5/8)		
CIRCLING	740-1 463 (500-1)	920-1 643 (700-1 3/4)	920-2 643 (700-2)	

SC-1, 16 MAY 2024 to 13 JUN 2024

SC-1, 16 MAY 2024 to 13 JUN 2024