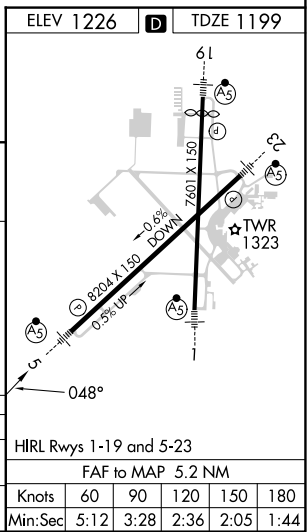
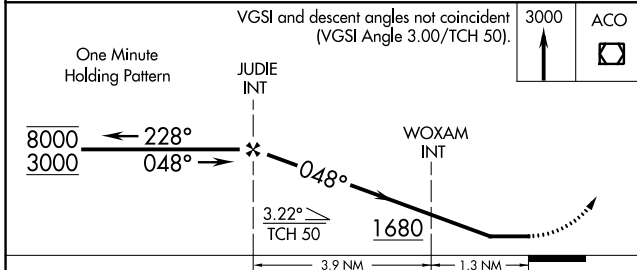
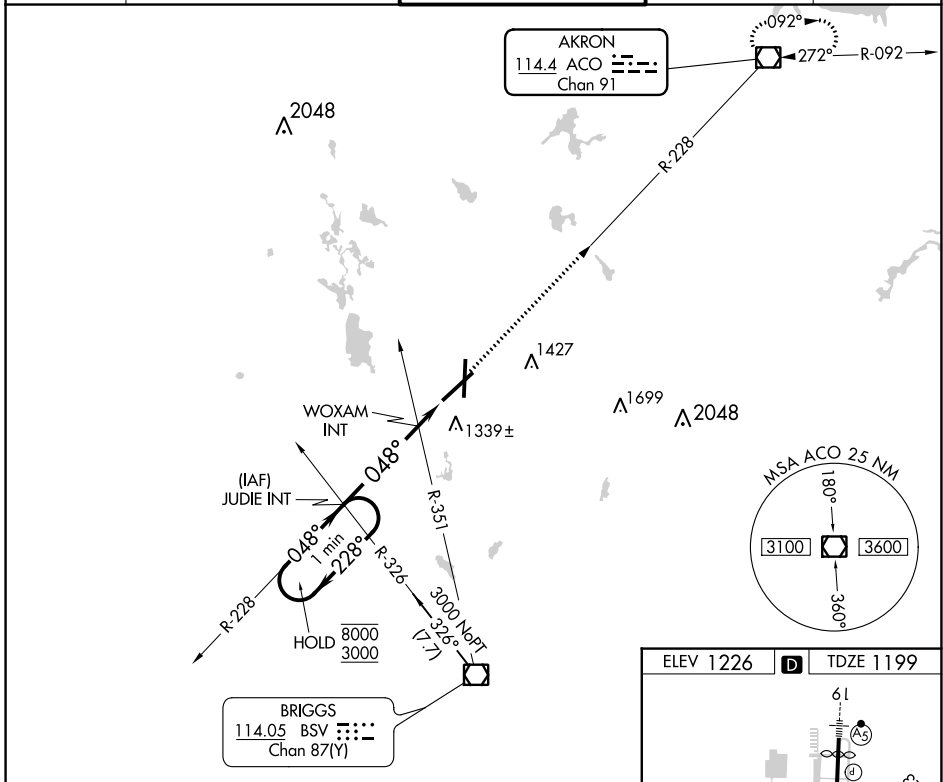


VOR/DME ACO 114.4 Chan 91	APP CRS 048°	Rwy Idg TDZE Apt Elev	8204 1199 1226
---	------------------------	-----------------------------	---

VOR RWY 5
AKRON-CANTON RGNL (CAK)

Dual VOR receivers required.		MALSR	MISSED APPROACH: Climb to 3000 direct ACO VOR/DME and hold.	
ATIS 121.05	CLEVELAND APP CON * 125.5 269.25	AKRON-CANTON TOWER 134.75 279.575	GND CON 121.7 348.6	CLNC DEL 132.05



CATEGORY	A	B	C	D
S-5	1600/24	401 (400-½)	1600/40 401 (400-¾)	1600/50 401 (400-1)
CIRCLING	1760-1	534 (600-1)	1780-1½ 554 (600-1½)	1800-2 574 (600-2)

HIRL Rwy 1-19 and 5-23					
FAF to MAP 5.2 NM					
Knots	60	90	120	150	180
Min:Sec	5:12	3:28	2:36	2:05	1:44