

WAAS CH <b>56340</b> <b>W17A</b>	APP CRS <b>173°</b>	Rwy ldg <b>5500</b> TDZE <b>1302</b> Apt Elev <b>1302</b>
--	------------------------	---

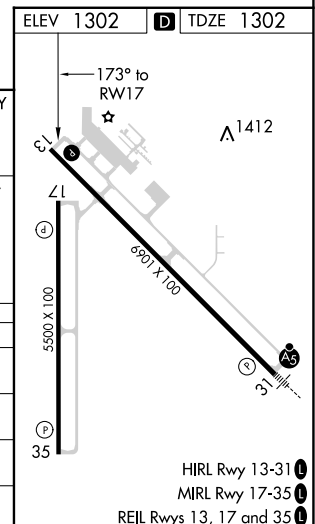
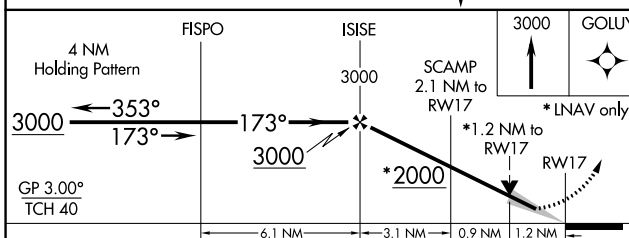
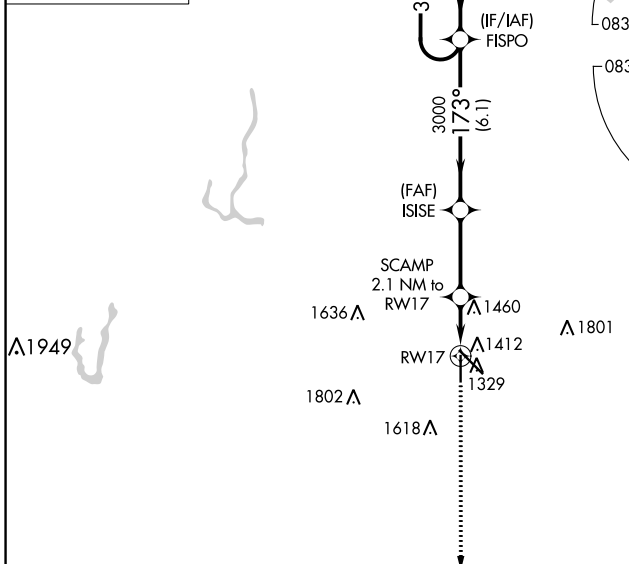
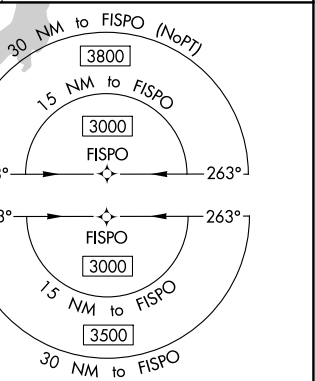
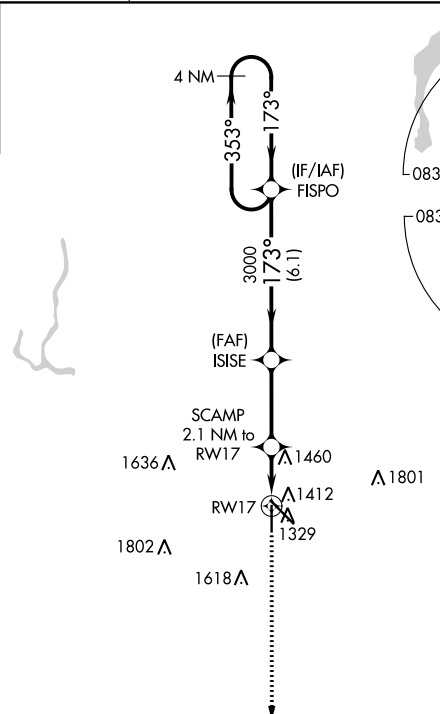
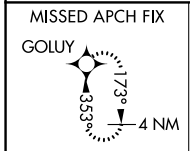
# RNAV (GPS) RWY 17

ABERDEEN RGNL (ABR)

**⚠** For uncompensated Baro-VNAV systems, LNAV/VNAV NA below -22°C (-7°F) or above 54°C (130°F).  
**⚠** DME/DME RNP-0.3 NA.

MISSED APPROACH: Climb to 3000 direct GOLUY and hold.

ASOS <b>125.875</b>	MINNEAPOLIS CENTER <b>120.6 371.9</b>	UNICOM <b>122.7 (CTAF) 0</b>
------------------------	--	---------------------------------



CATEGORY	A	B	C	D
LPV DA		1502-3/4	200 (200-3/4)	
LNAV/VNAV DA		1624-1 1/8	322 (400-1 1/8)	
LNAV MDA	1720-1	418 (500-1)	1720-1 1/8	418 (500-1 1/8)
<b>C</b> CIRCLING	1760-1 458 (500-1)	1860-1 558 (600-1)	1960-1 3/4 658 (700-1 3/4)	2160-2 3/4 858 (900-2 3/4)

NC-1, 16 MAY 2024 to 13 JUN 2024

NC-1, 16 MAY 2024 to 13 JUN 2024