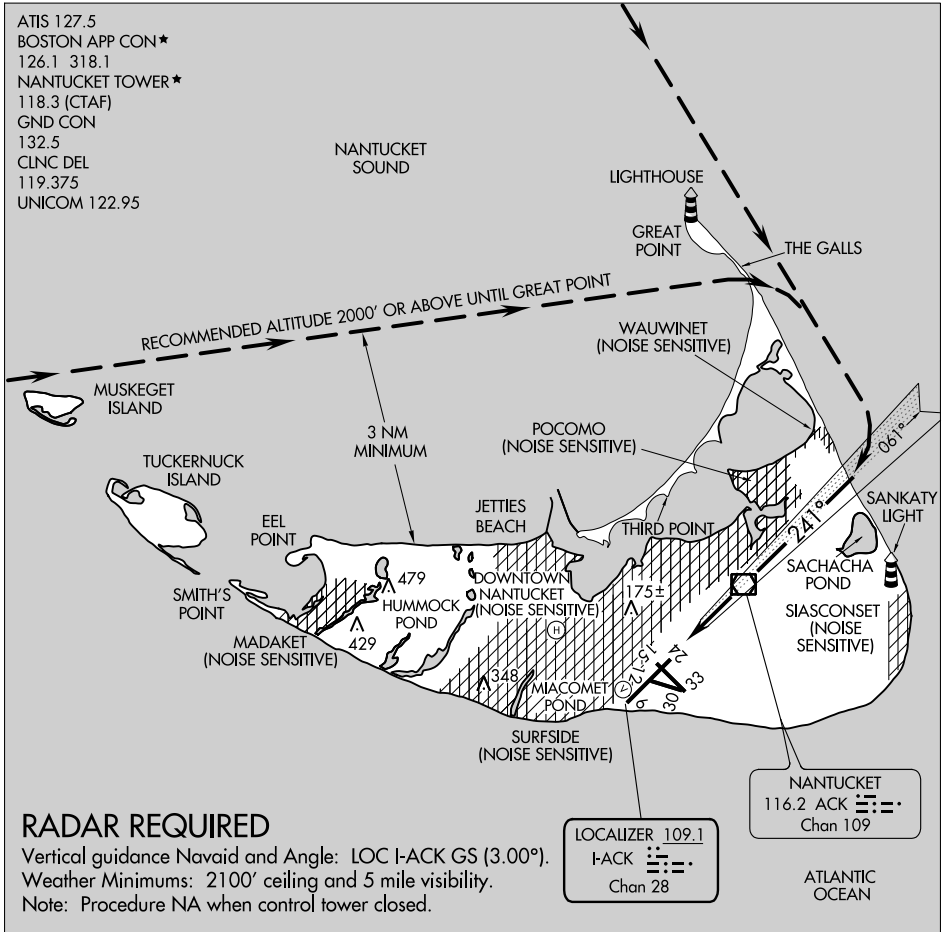


21112 **GREAT POINT VISUAL RWY 24** AL-659 (FAA) NANTUCKET MEML (ACK)
NANTUCKET, MASSACHUSETTS

ATIS 127.5
BOSTON APP CON ★
126.1 318.1
NANTUCKET TOWER ★
118.3 (CTAF)
GND CON
132.5
CLNC DEL
119.375
UNICOM 122.95



NE-1, 16 MAY 2024 to 13 JUN 2024

NE-1, 16 MAY 2024 to 13 JUN 2024

RADAR REQUIRED

Vertical guidance Navaid and Angle: LOC I-ACK GS (3.00°).
Weather Minimums: 2100' ceiling and 5 mile visibility.
Note: Procedure NA when control tower closed.

1 NM	2	3	4	5	6	7	8	9	10	11	12	13	14	15